



# Greater Las Vegas Association of REALTORS® August 2011 Statistics



	Single Family Residential Units			Condo/Townhouse Units		
	Aug 11	Change from Jul 11	Change from Aug 10	Aug 11	Change from Jul 11	Change from Aug 10
<b>AVAILABILITY AT END OF PERIOD</b>						
# of available units listed	22,400	-0.2%	-1.0%	4,862	-4.6%	-19.0%
Median list price of available units	\$ 129,900	+0.0%	-10.4%	64,900	+0.0%	-12.3%
Average list price of available units	\$ 203,102	-0.6%	-12.4%	126,245	+2.4%	-17.2%
<b>*AVAILABILITY AT END OF PERIOD</b>	Aug 11	Change from Jul 11	Change from Aug 10	Aug 11	Change from Jul 11	Change from Aug 10
# of available units listed w/o offers	11,190	+2.0%	-1.2%	2,387	-4.2%	-21.1%
Median list price of available units w/o offers	\$ 135,000	+0.0%	-12.8%	\$ 70,000	+1.4%	-12.5%
Average list price of available units w/o offers	\$ 248,830	-1.4%	-15.7%	\$ 174,637	+4.1%	-18.8%
<b>NEW LISTINGS THIS PERIOD</b>	Aug 11	Change from Jul 11	Change from Aug 10	Aug 11	Change from Jul 11	Change from Aug 10
# of new listings	4,688	+3.4%	-6.4%	1,003	-11.4%	-16.8%
Median price of new listings	\$ 129,900	+0.0%	-10.4%	\$ 62,000	+1.7%	-11.3%
Average price of new listings	\$ 173,656	+0.3%	-13.0%	\$ 94,752	+7.6%	-28.9%
<b>UNITS SOLD THIS PERIOD</b>	Aug 11	Change from Jul 11	Change from Aug 10	Aug 11	Change from Jul 11	Change from Aug 10
# of units sold	3,706	+17.1%	+31.5%	987	+13.1%	+20.5%
Median price of units sold	\$ 120,000	-1.6%	-14.3%	\$ 56,000	-5.1%	-16.4%
Average price of units sold	\$ 147,398	-2.4%	-12.8%	\$ 74,213	-3.0%	-16.9%
<b>TIME ON MARKET FOR UNITS SOLD THIS PERIOD</b>	Aug 11	Jul 11	Aug 10	Aug 11	Jul 11	Aug 10
0-30 days	41.9%	43.1%	49.7%	43.5%	40.8%	44.3%
31-60 days	22.2%	22.4%	18.4%	24.2%	27.7%	22.0%
61-90 days	12.9%	13.0%	10.3%	12.6%	13.9%	11.7%
91-120 days	7.2%	7.0%	6.4%	7.1%	6.5%	7.3%
121+ days	15.8%	14.4%	15.2%	12.7%	11.1%	14.7%
<b>TOTAL HOME SALES DOLLAR VALUE FOR UNITS SOLD THIS PERIOD</b>	Aug 11	Change from Jul 11	Change from Aug 10	Aug 11	Change from Jul 11	Change from Aug 10
	\$ 546,255,823	+14.3%	+14.7%	\$ 73,248,035	+9.7%	+0.1%

**\*This category reflects the existing market availability of listings without pending or contingent offers.**

Source: Greater Las Vegas Association of REALTORS®

For media inquiries, please call George McCabe, with B&P Public Relations, at (702) 325-7358.

DISCLAIMER: This data is based on information from the Greater Las Vegas Association of REALTORS® (GLVAR) Multiple Listing Service (MLS). This information is deemed reliable but is not guaranteed. MLS collects, compiles and distributes information about homes listed for sale by its subscribers who are real estate agents. MLS subscription is available to all real estate agents licensed in Nevada, but is not available to the general public. Not all licensed agents subscribe to the MLS. MLS does not include all new homes available or listings from non-MLS agents, nor does it include properties for sale by owner. The territorial jurisdiction of the GLVAR as a member of the National Association of REALTORS® includes Clark, Nye, Lincoln and White Pine Counties, Nevada, and such other areas as from time to time may be allocated to the GLVAR by the Board of Directors of the National Association of REALTORS®.



## Greater Las Vegas Association of REALTORS® August 2011 Statistics

### Sold Units Statistics by Area (see map)

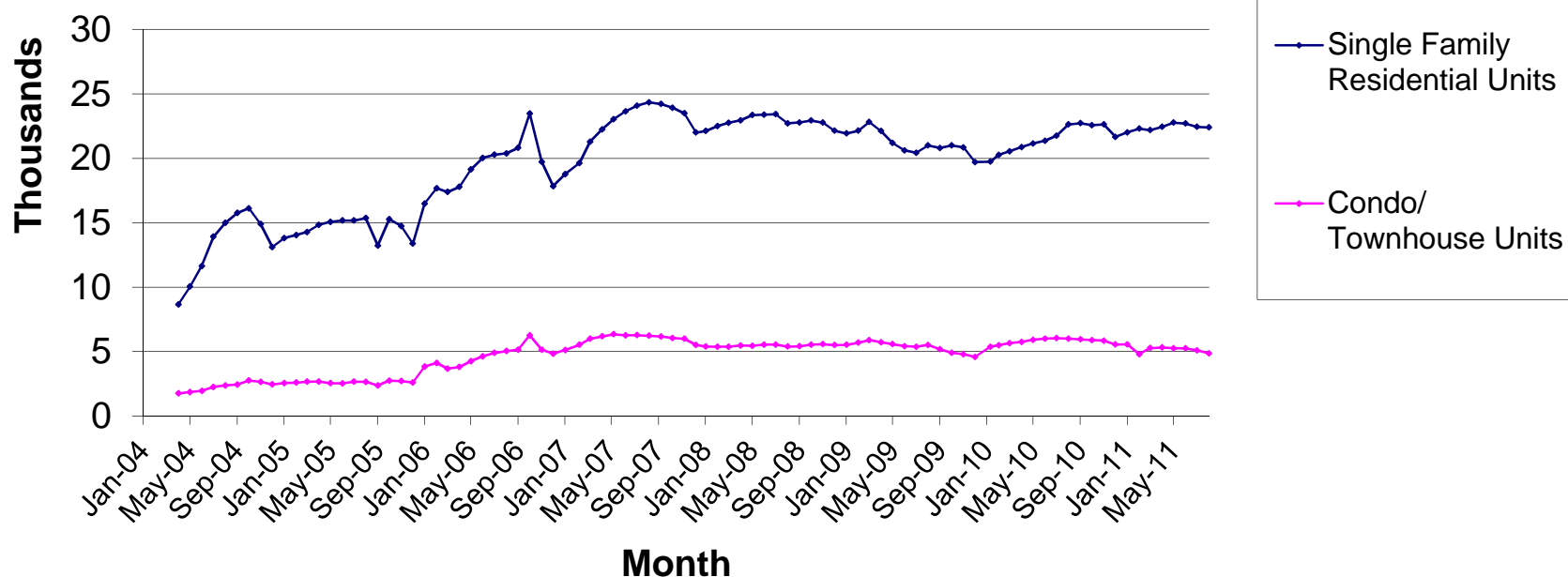
Area	Single Family Residential Units			Condo/Townhouse Units		
	# of units sold	Median Sold Price	Average Sold Price	# of units sold	Median Sold Price	Average Sold Price
101 - North	42	\$50,500	\$51,743	5	\$34,500	\$32,978
102 - North	246	\$130,000	\$151,125	8	\$51,200	\$70,738
103 - North	444	\$106,500	\$116,753	34	\$50,100	\$55,026
201 - East	58	\$36,801	\$41,557	6	\$20,255	\$53,418
202 - East	93	\$57,000	\$57,704	32	\$27,750	\$29,067
203 - East	112	\$79,700	\$91,945	17	\$36,000	\$41,252
204 - East	187	\$81,000	\$86,352	36	\$35,150	\$39,193
301 - South	86	\$68,000	\$82,888	82	\$59,050	\$106,302
302 - South	94	\$85,500	\$114,523	61	\$49,820	\$79,274
303 - South	212	\$129,950	\$142,518	59	\$75,000	\$81,760
401 - North West	29	\$60,000	\$72,405	4	\$35,000	\$33,475
402 - North West	126	\$66,800	\$78,853	39	\$37,500	\$38,418
403 - North West	102	\$97,000	\$128,346	101	\$48,500	\$52,429
404 - North West	156	\$189,950	\$240,333	33	\$107,000	\$137,806
405 - North West	257	\$124,500	\$148,865	39	\$68,900	\$68,888
501 - South West	64	\$124,000	\$132,507	34	\$48,950	\$54,762
502 - South West	168	\$174,000	\$231,985	49	\$50,500	\$65,868
503 - South West	149	\$135,000	\$186,557	144	\$55,000	\$93,569
504 - South West	218	\$127,500	\$144,579	41	\$66,000	\$64,523
505 - South West	195	\$155,000	\$198,697	20	\$77,060	\$78,911
601 - Henderson	49	\$127,500	\$160,452	25	\$54,000	\$61,180
602 - Henderson	115	\$150,000	\$164,298	38	\$75,000	\$76,324
603 - Henderson	49	\$140,000	\$178,873	14	\$52,450	\$108,932
604 - Henderson	59	\$113,000	\$122,084	4	\$65,500	\$66,000
605 - Henderson	105	\$134,500	\$140,892	23	\$63,000	\$66,450
606 - Henderson	214	\$220,000	\$271,338	34	\$81,000	\$106,117
701 - Boulder City	10	\$233,500	\$258,642	2	\$85,600	\$85,600
702 - Boulder City	1	\$120,000	\$120,000	1	\$192,500	\$192,500
800 - Mesquite	3	\$172,500	\$161,500	-	\$0	\$0
801 - Muddy River (Moapa, Glendale, Logandale, Overton)	5	\$78,900	\$103,420	-	\$0	\$0
802 - Mt. Charleston/Lee Canyon	4	\$177,500	\$177,000	-	\$0	\$0
803 - Indian Springs/Cold Creek	-	\$0	\$0	-	\$0	\$0
804 - Mountain Springs	1	\$321,049	\$321,049	-	\$0	\$0
805 - Blue Diamond	-	\$0	\$0	-	\$0	\$0
806 - State Line/Jean/Goodspings	-	\$0	\$0	-	\$0	\$0
807 - Sandy Valley	-	\$0	\$0	-	\$0	\$0
808 - Laughlin	-	\$0	\$0	1	\$108,000	\$108,000
809 - Other Clark County	-	\$0	\$0	-	\$0	\$0
810 - Pahrump	44	\$112,450	\$112,829	-	\$0	\$0
811 - Nye County	-	\$0	\$0	-	\$0	\$0
812 - Lincoln County	-	\$0	\$0	-	\$0	\$0
813 - Other Nevada	-	\$0	\$0	-	\$0	\$0
814 - Amargosa Valley	-	\$0	\$0	-	\$0	\$0
815 - Beatty	-	\$0	\$0	-	\$0	\$0
816 - White Pine County	8	\$87,250	\$91,375	-	\$0	\$0
900 - Outside Nevada	1	\$329,500	\$329,500	1	\$131,500	\$131,500

Source: Greater Las Vegas Association of REALTORS®

For media inquiries, please call George McCabe, B&P Public Relations, at (702) 325-7358.

DISCLAIMER: This data is based on information from the Greater Las Vegas Association of REALTORS® (GLVAR) Multiple Listing Service (MLS). This information is deemed reliable but is not guaranteed. MLS collects, compiles and distributes information about homes listed for sale by its subscribers who are real estate agents. MLS subscription is available to all real estate agents licensed in Nevada, but is not available to the general public. Not all licensed agents subscribe to the MLS. MLS does not include all new homes available or listings from non-MLS agents, nor does it include properties for sale by owner. The territorial jurisdiction of the GLVAR as a member of the National Association of REALTORS® includes Clark, Nye, Lincoln and White Pine Counties, Nevada, and such other areas as from time to time may be allocated to the GLVAR by the Board of Directors of the National Association of REALTORS®.

## Availability at End of Period



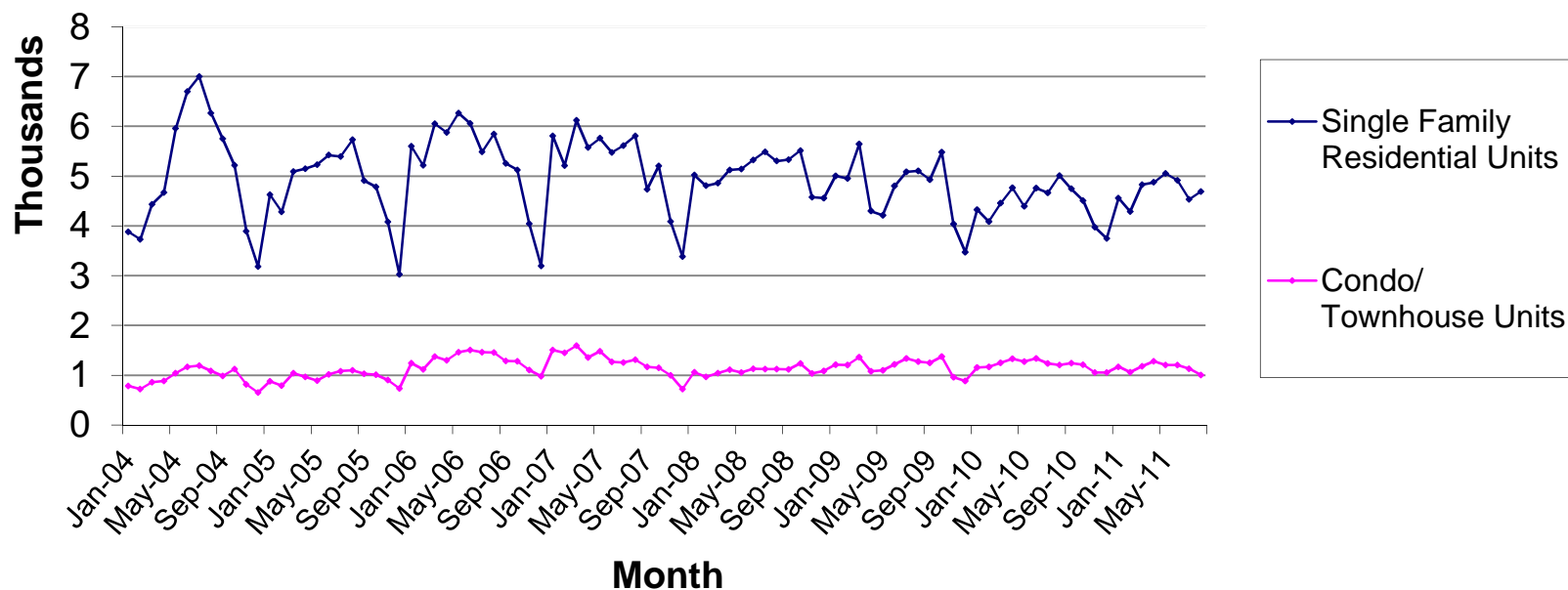
Source: Greater Las Vegas Association of REALTORS®

For media inquiries, please call George McCabe, B&P Public Relations, at (702) 325-7358.

**DISCLAIMER:** This data is based on information from the Greater Las Vegas Association of REALTORS® (GLVAR) Multiple Listing Service (MLS). This information is deemed reliable but is not guaranteed. MLS collects, compiles and distributes information about homes listed for sale by its subscribers who are real estate agents. MLS subscription is available to all real estate agents licensed in Nevada, but is not available to the general public. Not all licensed agents subscribe to the MLS. MLS does not include all new homes available or listings from non-MLS agents, nor does it include properties for sale by owner. The territorial jurisdiction of the GLVAR as a member of the National Association of REALTORS® includes Clark, Nye, White Pine and Lincoln Counties, Nevada, and such other areas as from time to time may be allocated to the GLVAR by the Board of Directors of the National Association of REALTORS®.



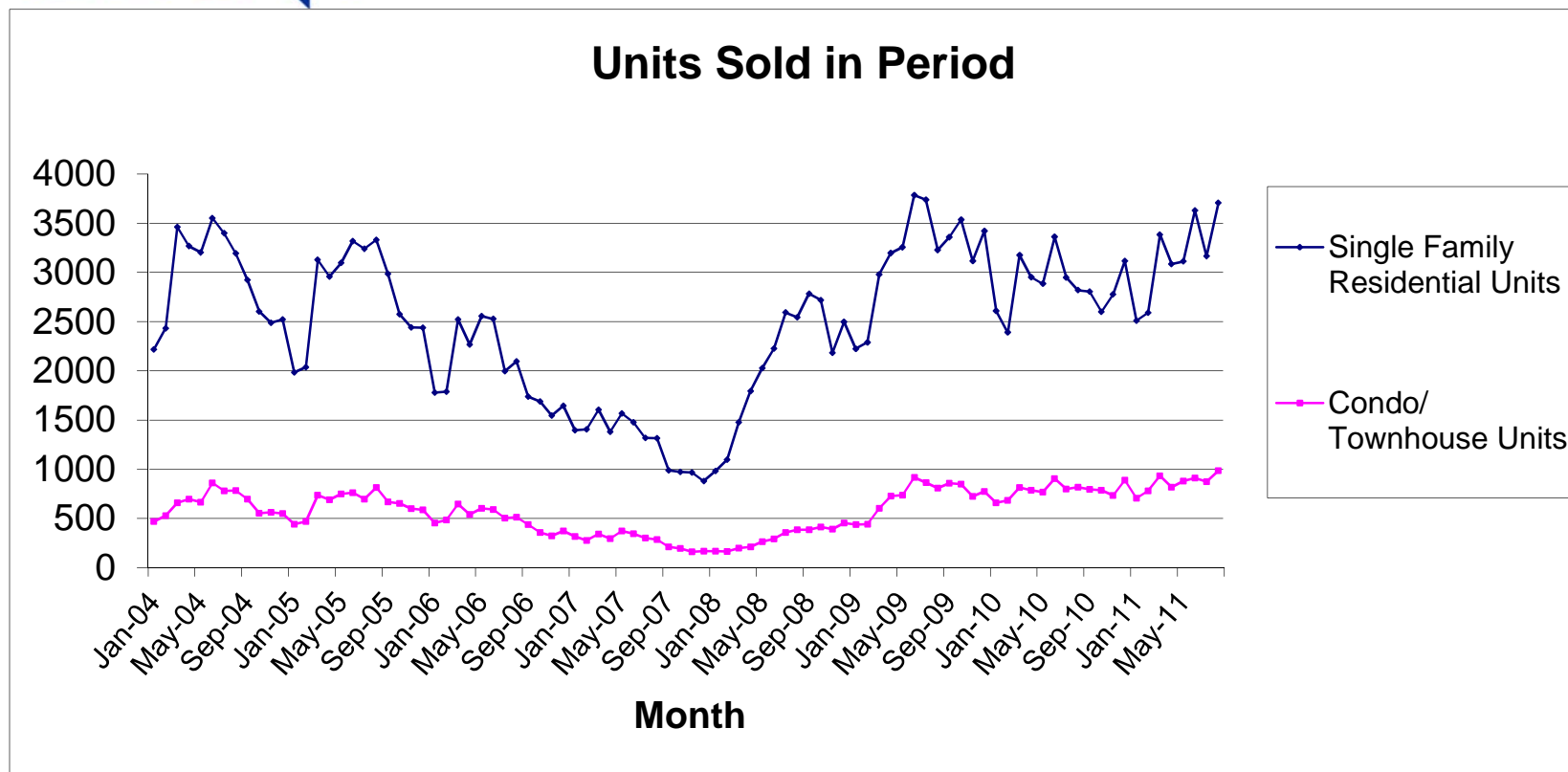
## Number of New Listings



Source: Greater Las Vegas Association of REALTORS®

For media inquiries, please call George McCabe, B&P Public Relations, at (702) 325-7358.

**DISCLAIMER:** This data is based on information from the Greater Las Vegas Association of REALTORS® (GLVAR) Multiple Listing Service (MLS). This information is deemed reliable but is not guaranteed. MLS collects, compiles and distributes information about homes listed for sale by its subscribers who are real estate agents. MLS subscription is available to all real estate agents licensed in Nevada, but is not available to the general public. Not all licensed agents subscribe to the MLS. MLS does not include all new homes available or listings from non-MLS agents, nor does it include properties for sale by owner. The territorial jurisdiction of the GLVAR as a member of the National Association of REALTORS® includes Clark, Nye, White Pine and Lincoln Counties, Nevada, and such other areas as from time to time may be allocated to the GLVAR by the Board of Directors of the National Association of REALTORS®.

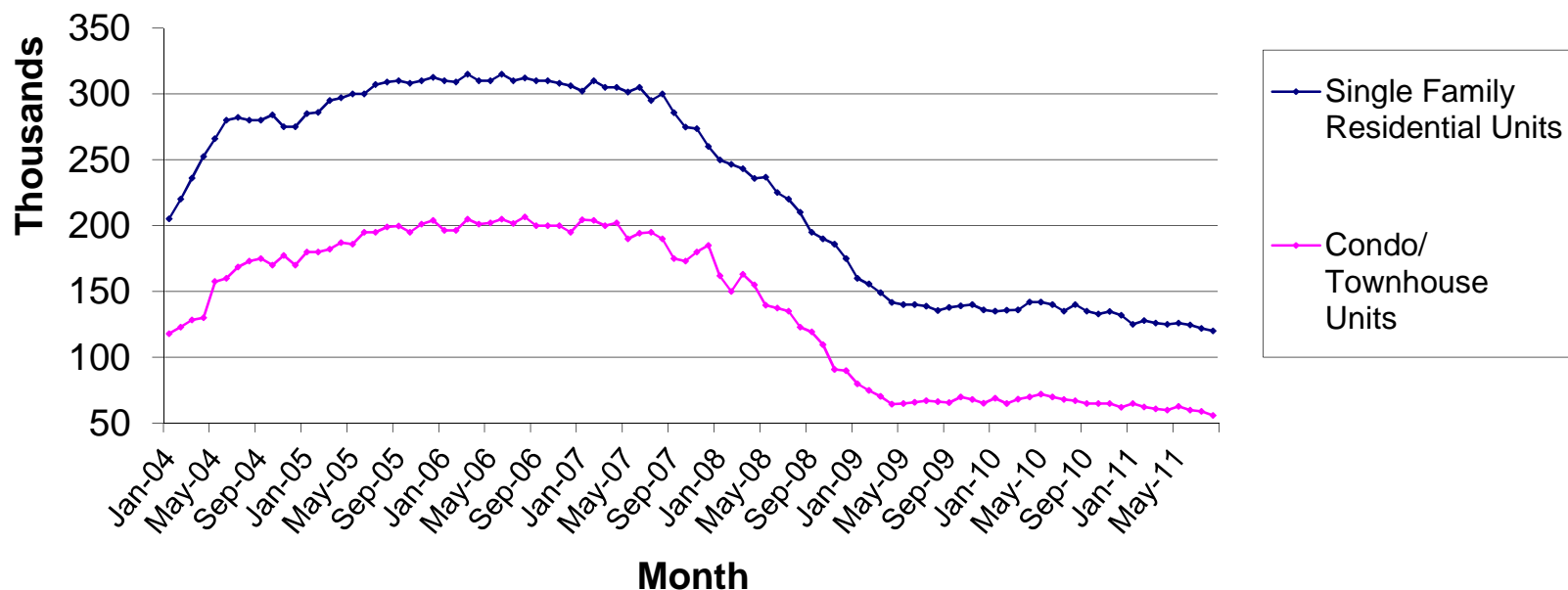


Source: Greater Las Vegas Association of REALTORS®

For media inquiries, please call George McCabe, B&P Public Relations, at (702) 325-7358.

**DISCLAIMER:** This data is based on information from the Greater Las Vegas Association of REALTORS® (GLVAR) Multiple Listing Service (MLS). This information is deemed reliable but is not guaranteed. MLS collects, compiles and distributes information about homes listed for sale by its subscribers who are real estate agents. MLS subscription is available to all real estate agents licensed in Nevada, but is not available to the general public. Not all licensed agents subscribe to the MLS. MLS does not include all new homes available or listings from non-MLS agents, nor does it include properties for sale by owner. The territorial jurisdiction of the GLVAR as a member of the National Association of REALTORS® includes Clark, Nye, White Pine and Lincoln Counties, Nevada, and such other areas as from time to time may be allocated to the GLVAR by the Board of Directors of the National Association of REALTORS®.

## Median Price of Units Sold in Period

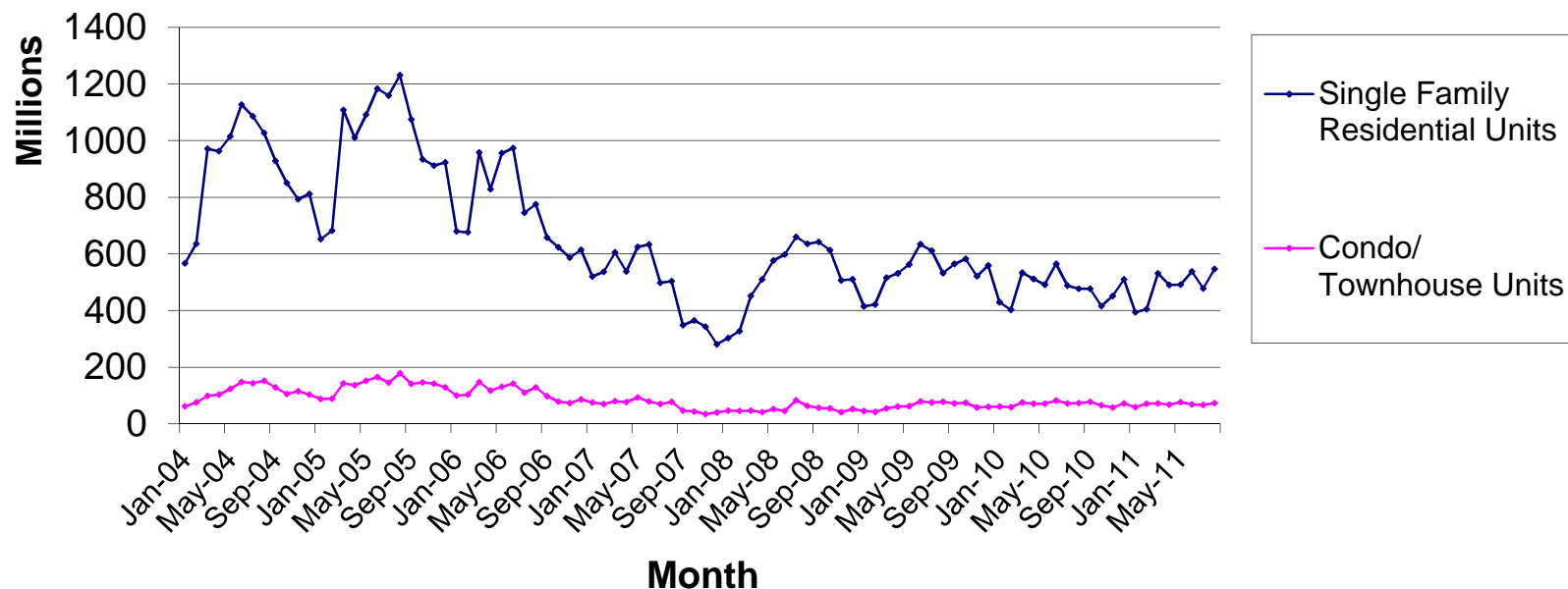


Source: Greater Las Vegas Association of REALTORS®

For media inquiries, please call George McCabe, B&P Public Relations, at (702) 325-7358.

**DISCLAIMER:** This data is based on information from the Greater Las Vegas Association of REALTORS® (GLVAR) Multiple Listing Service (MLS). This information is deemed reliable but is not guaranteed. MLS collects, compiles and distributes information about homes listed for sale by its subscribers who are real estate agents. MLS subscription is available to all real estate agents licensed in Nevada, but is not available to the general public. Not all licensed agents subscribe to the MLS. MLS does not include all new homes available or listings from non-MLS agents, nor does it include properties for sale by owner. The territorial jurisdiction of the GLVAR as a member of the National Association of REALTORS® includes Clark, Nye, White Pine and Lincoln Counties, Nevada, and such other areas as from time to time may be allocated to the GLVAR by the Board of Directors of the National Association of REALTORS®.

## Total Home Sales Value for Units Sold in Period



Source: Greater Las Vegas Association of REALTORS®

For media inquiries, please call George McCabe, B&P Public Relations, at (702) 325-7358.

**DISCLAIMER:** This data is based on information from the Greater Las Vegas Association of REALTORS® (GLVAR) Multiple Listing Service (MLS). This information is deemed reliable but is not guaranteed. MLS collects, compiles and distributes information about homes listed for sale by its subscribers who are real estate agents. MLS subscription is available to all real estate agents licensed in Nevada, but is not available to the general public. Not all licensed agents subscribe to the MLS. MLS does not include all new homes available or listings from non-MLS agents, nor does it include properties for sale by owner. The territorial jurisdiction of the GLVAR as a member of the National Association of REALTORS® includes Clark, Nye, White Pine and Lincoln Counties, Nevada, and such other areas as from time to time may be allocated to the GLVAR by the Board of Directors of the National Association of REALTORS®.