



## Greater Las Vegas Association of REALTORS® July 2011 Statistics



	Single Family Residential Units			Condo/Townhouse Units		
	Jul 11	Change from Jun 11	Change from Jul 10	Jul 11	Change from Jun 11	Change from Jul 10
<b>AVAILABILITY AT END OF PERIOD</b>						
# of available units listed	22,442	-1.1%	+3.2%	5,096	-2.9%	-15.6%
Median list price of available units	\$ 129,900	+0.0%	-10.4%	64,888	-0.0%	-13.4%
Average list price of available units	\$ 204,306	-0.9%	-13.8%	123,305	-1.3%	-17.4%
<b>*AVAILABILITY AT END OF PERIOD</b>						
# of available units listed w/o offers	10,975	-3.3%	+8.4%	2,492	-6.2%	-13.9%
Median list price of available units w/o offers	\$ 135,000	+0.0%	-15.6%	\$ 69,000	+0.3%	-18.8%
Average list price of available units w/o offers	\$ 252,461	-0.8%	-20.2%	\$ 167,820	+1.1%	-22.0%
<b>NEW LISTINGS THIS PERIOD</b>						
# of new listings	4,533	-7.8%	-2.8%	1,132	-6.2%	-8.3%
Median price of new listings	\$ 129,900	+0.0%	-10.2%	\$ 60,940	-3.0%	-12.9%
Average price of new listings	\$ 173,059	-4.1%	-12.2%	\$ 88,032	-5.1%	-18.6%
<b>UNITS SOLD THIS PERIOD</b>						
# of units sold	3,164	-12.8%	+7.3%	873	-4.2%	+9.1%
Median price of units sold	\$ 122,000	-2.0%	-9.6%	\$ 59,000	-1.5%	-13.2%
Average price of units sold	\$ 151,077	+2.0%	-8.6%	\$ 76,514	+1.9%	-14.8%
<b>TIME ON MARKET FOR UNITS SOLD THIS PERIOD</b>						
	Jun 11	May 11	Jun 10	Jun 11	May 11	Jun 10
0-30 days	43.1%	45.2%	52.0%	40.8%	40.8%	54.0%
31-60 days	22.4%	21.4%	17.5%	27.7%	28.9%	20.4%
61-90 days	13.0%	10.7%	9.4%	13.9%	11.5%	9.0%
91-120 days	7.0%	7.4%	7.2%	6.5%	5.6%	3.9%
121+ days	14.4%	15.3%	14.0%	11.1%	13.2%	12.8%
<b>TOTAL HOME SALES DOLLAR VALUE FOR UNITS SOLD THIS PERIOD</b>						
	Jul 11	Change from Jun 11	Change from Jul 10	Jul 11	Change from Jun 11	Change from Jul 10
	\$ 478,008,839	-11.1%	-1.9%	\$ 66,796,773	-2.3%	-7.1%

**\*This category reflects the existing market availability of listings without pending or contingent offers.**

Source: Greater Las Vegas Association of REALTORS®

For media inquiries, please call George McCabe, with B&P Public Relations, at (702) 325-7358.

DISCLAIMER: This data is based on information from the Greater Las Vegas Association of REALTORS® (GLVAR) Multiple Listing Service (MLS). This information is deemed reliable but is not guaranteed. MLS collects, compiles and distributes information about homes listed for sale by its subscribers who are real estate agents. MLS subscription is available to all real estate agents licensed in Nevada, but is not available to the general public. Not all licensed agents subscribe to the MLS. MLS does not include all new homes available or listings from non-MLS agents, nor does it include properties for sale by owner. The territorial jurisdiction of the GLVAR as a member of the National Association of REALTORS® includes Clark, Nye, Lincoln and White Pine Counties, Nevada, and such other areas as from time to time may be allocated to the GLVAR by the Board of Directors of the National Association of REALTORS®.



## Greater Las Vegas Association of REALTORS® July 2011 Statistics

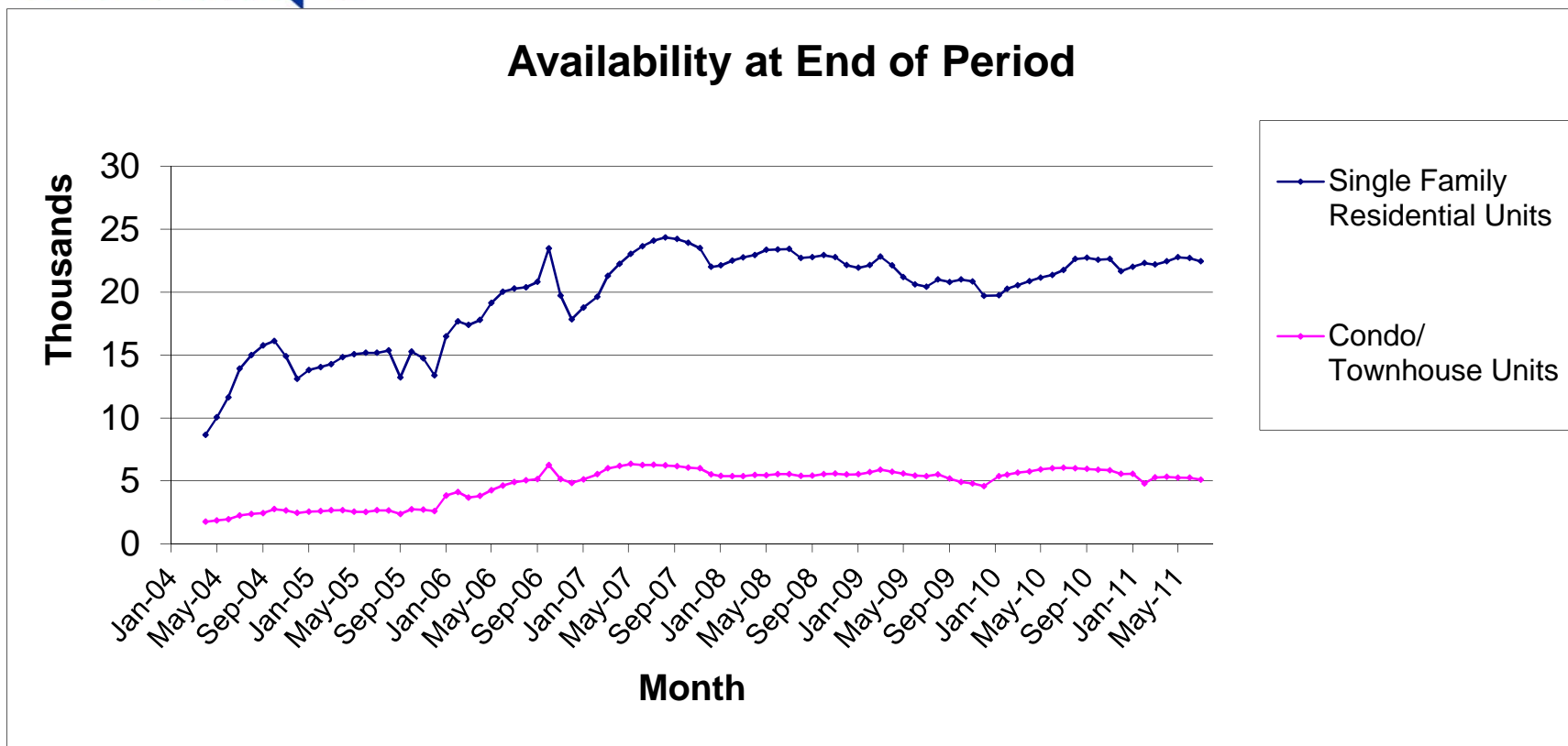
### Sold Units Statistics by Area (see map)

Area	Single Family Residential Units			Condo/Townhouse Units		
	# of units sold	Median Sold Price	Average Sold Price	# of units sold	Median Sold Price	Average Sold Price
101 - North	52	205,000	195,086	4	164,000	140,875
102 - North	254	333,500	375,361	3	205,000	154,075
103 - North	377	279,100	292,299	30	201,750	200,545
201 - East	61	175,000	175,322	4	93,500	84,875
202 - East	82	208,000	210,887	26	86,000	101,215
203 - East	110	250,000	279,643	22	156,450	147,395
204 - East	142	252,250	259,411	37	156,000	155,549
301 - South	60	257,500	279,793	42	189,950	359,823
302 - South	78	267,000	292,503	50	136,000	151,124
303 - South	218	324,950	340,037	30	231,750	250,608
401 - North West	29	225,000	241,207	-	-	-
402 - North West	121	247,000	254,345	37	160,000	159,521
403 - North West	126	292,000	324,721	64	184,950	186,238
404 - North West	154	392,500	536,655	35	248,900	276,749
405 - North West	171	325,000	374,693	43	215,000	219,910
501 - South West	50	303,000	363,062	29	163,000	158,910
502 - South West	190	404,950	485,325	35	225,000	226,866
503 - South West	146	335,000	408,756	71	207,000	220,400
504 - South West	140	312,000	361,608	16	187,500	188,773
505 - South West	72	399,250	513,465	1	249,000	249,000
601 - Henderson	34	325,864	354,614	25	206,000	210,700
602 - Henderson	123	367,000	409,130	40	229,944	241,317
603 - Henderson	31	268,000	407,394	5	245,500	297,117
604 - Henderson	62	306,000	313,865	9	230,000	208,222
605 - Henderson	89	317,500	344,551	14	229,500	219,111
606 - Henderson	217	439,500	507,917	16	248,650	271,419
701 - Boulder City	8	393,500	468,988	1	325,000	325,000
702 - Boulder City	2	575,000	575,000	4	356,250	355,125
800 - Mesquite	1	230,000	230,000	5	109,900	119,710
801 - Muddy River (Moapa, Glendale, Logandale, Overton)	6	354,000	366,667	-	-	-
802 - Mt. Charleston/Lee Canyon	2	595,000	595,000	-	-	-
803 - Indian Springs/Cold Creek	-	-	-	-	-	-
804 - Mountain Springs	-	-	-	-	-	-
805 - Blue Diamond	-	-	-	-	-	-
806 - State Line/Jean/Goodsprings	-	-	-	-	-	-
807 - Sandy Valley	-	-	-	-	-	-
808 - Laughlin	-	-	-	1	184,000	184,000
809 - Other Clark County	-	-	-	-	-	-
810 - Pahrump	33	285,000	264,502	-	-	-
811 - Nye County	-	-	-	-	-	-
812 - Lincoln County	2	127,800	127,800	-	-	-
813 - Other Nevada	7	93,000	91,557	-	-	-
814 - Amargosa Valley	1	139,900	139,900	-	-	-
815 - Beatty	-	-	-	-	-	-
900 - Outside Nevada	-	-	-	-	-	-

Source: Greater Las Vegas Association of REALTORS®

For more information, please call George McCabe, Brown & Partners, at (702) 325-7358.

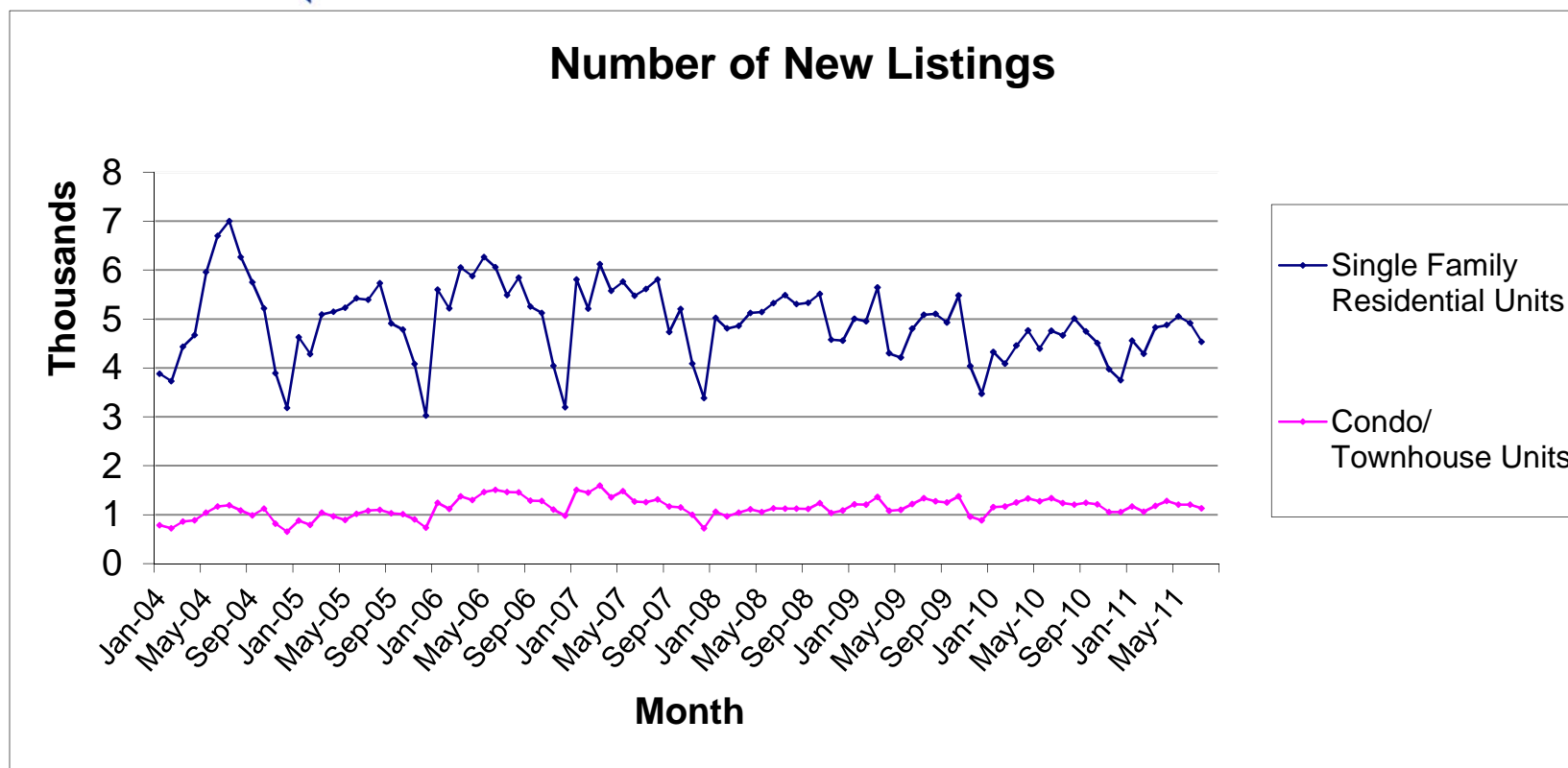
DISCLAIMER: This data is based on information from the Greater Las Vegas Association of REALTORS® (GLVAR) Multiple Listing Service (MLS). This information is deemed reliable but is not guaranteed. MLS collects, compiles and distributes information about homes listed for sale by its subscribers who are real estate agents. MLS subscription is available to all real estate agents licensed in Nevada, but is not available to the general public. Not all licensed agents subscribe to the MLS. MLS does not include all new homes available or listings from non-MLS agents, nor does it include properties for sale by owner. The territorial jurisdiction of the GLVAR as a member of the National Association of REALTORS® includes Clark and Nye Counties, Nevada, and such other areas as from time to time may be allocated to the GLVAR by the Board of Directors of the National Association of REALTORS®.



Source: Greater Las Vegas Association of REALTORS®

For media inquires, please call George McCabe, B&P Public Relations, at (702) 325-7358.

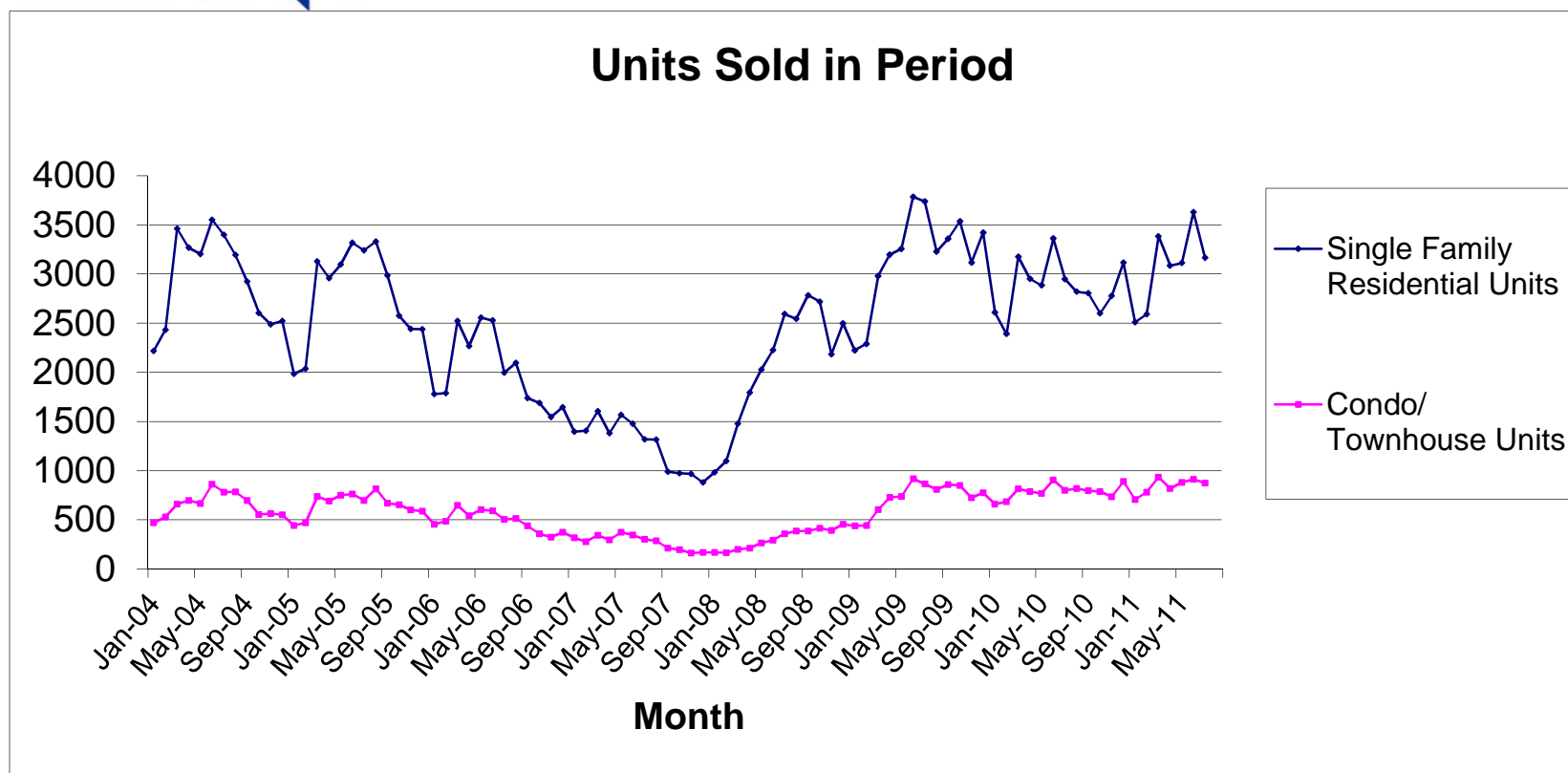
**DISCLAIMER:** This data is based on information from the Greater Las Vegas Association of REALTORS® (GLVAR) Multiple Listing Service (MLS). This information is deemed reliable but is not guaranteed. MLS collects, compiles and distributes information about homes listed for sale by its subscribers who are real estate agents. MLS subscription is available to all real estate agents licensed in Nevada, but is not available to the general public. Not all licensed agents subscribe to the MLS. MLS does not include all new homes available or listings from non-MLS agents, nor does it include properties for sale by owner. The territorial jurisdiction of the GLVAR as a member of the National Association of REALTORS® includes Clark, Nye, White Pine and Lincoln Counties, Nevada, and such other areas as from time to time may be allocated to the GLVAR by the Board of Directors of the National Association of REALTORS®.



Source: Greater Las Vegas Association of REALTORS®

For media inquiries, please call George McCabe, B&P Public Relations, at (702) 325-7358.

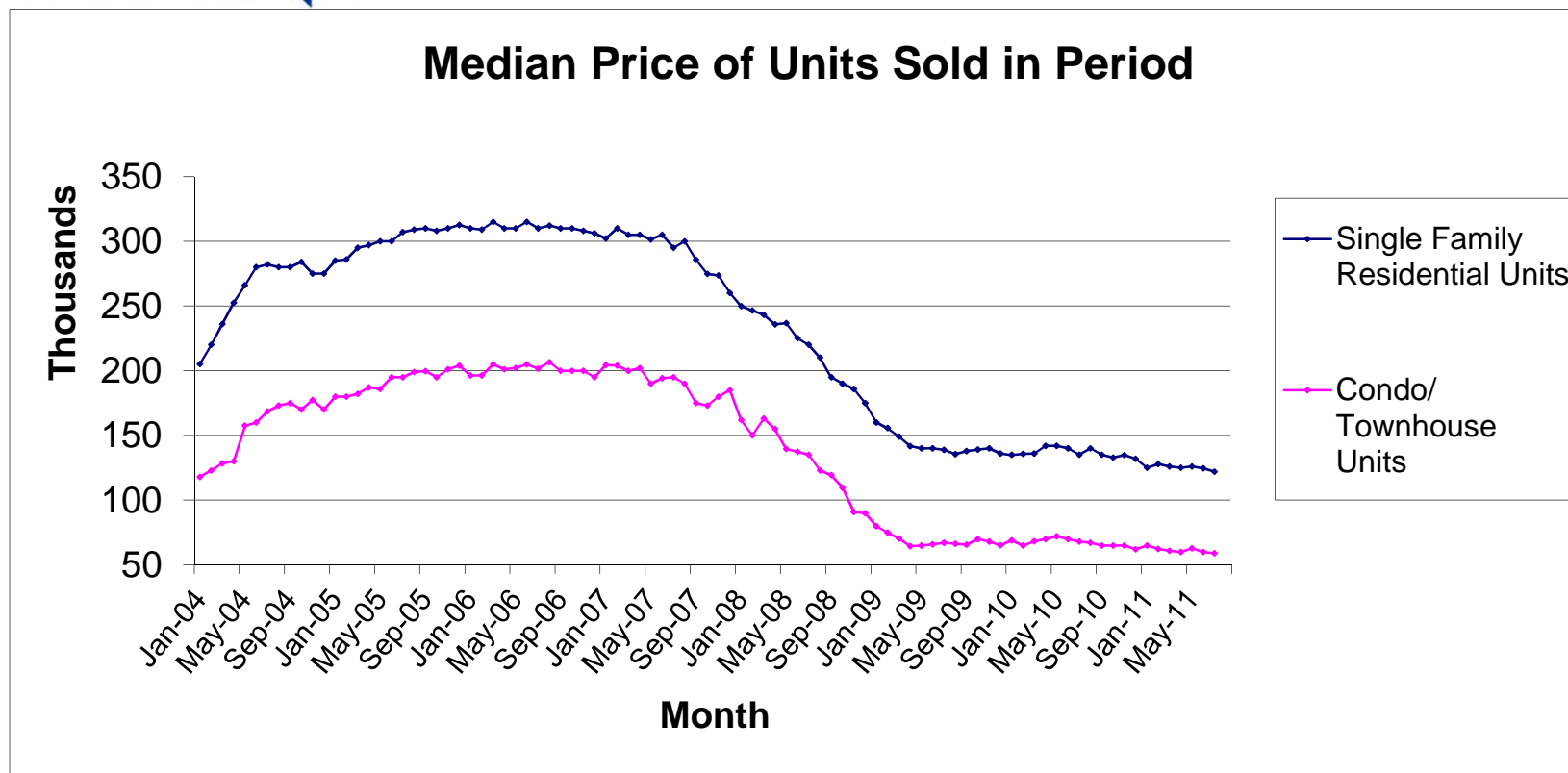
**DISCLAIMER:** This data is based on information from the Greater Las Vegas Association of REALTORS® (GLVAR) Multiple Listing Service (MLS). This information is deemed reliable but is not guaranteed. MLS collects, compiles and distributes information about homes listed for sale by its subscribers who are real estate agents. MLS subscription is available to all real estate agents licensed in Nevada, but is not available to the general public. Not all licensed agents subscribe to the MLS. MLS does not include all new homes available or listings from non-MLS agents, nor does it include properties for sale by owner. The territorial jurisdiction of the GLVAR as a member of the National Association of REALTORS® includes Clark, Nye, White Pine and Lincoln Counties, Nevada, and such other areas as from time to time may be allocated to the GLVAR by the Board of Directors of the National Association of REALTORS®.



Source: Greater Las Vegas Association of REALTORS®

For media inquiries, please call George McCabe, B&P Public Relations, at (702) 325-7358.

**DISCLAIMER:** This data is based on information from the Greater Las Vegas Association of REALTORS® (GLVAR) Multiple Listing Service (MLS). This information is deemed reliable but is not guaranteed. MLS collects, compiles and distributes information about homes listed for sale by its subscribers who are real estate agents. MLS subscription is available to all real estate agents licensed in Nevada, but is not available to the general public. Not all licensed agents subscribe to the MLS. MLS does not include all new homes available or listings from non-MLS agents, nor does it include properties for sale by owner. The territorial jurisdiction of the GLVAR as a member of the National Association of REALTORS® includes Clark, Nye, White Pine and Lincoln Counties, Nevada, and such other areas as from time to time may be allocated to the GLVAR by the Board of Directors of the National Association of REALTORS®.

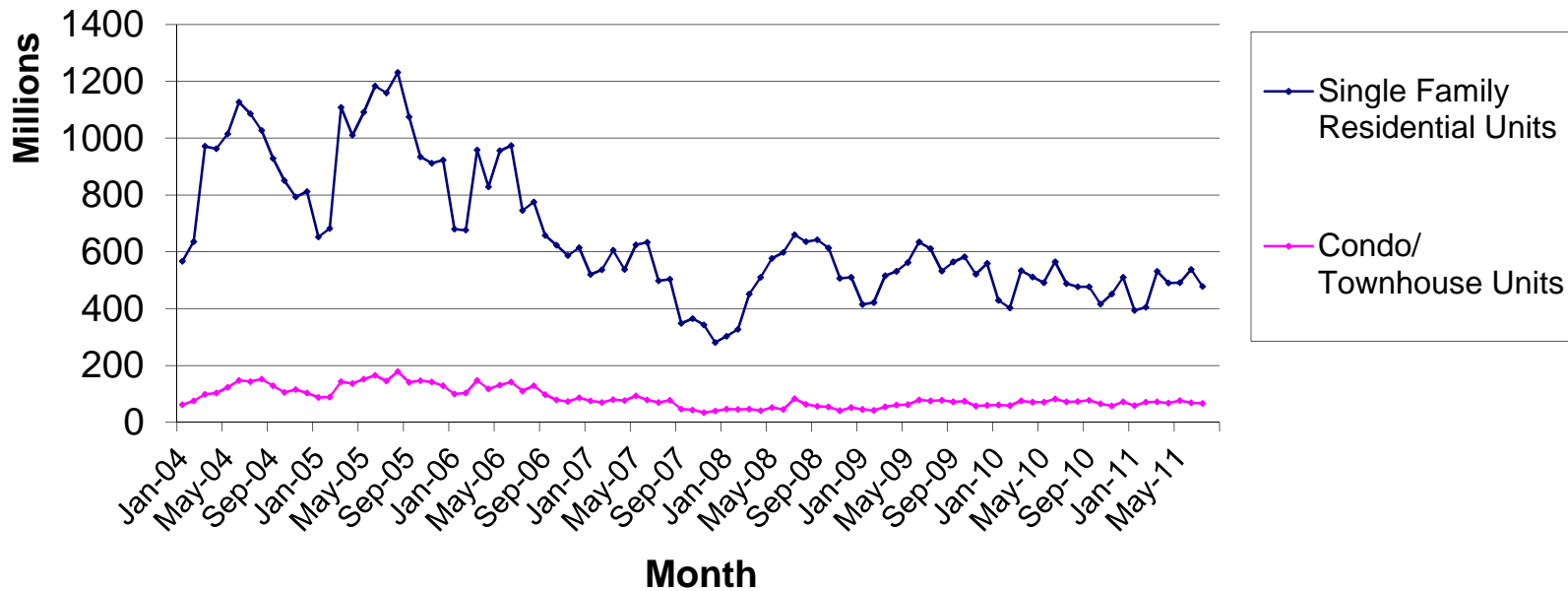


Source: Greater Las Vegas Association of REALTORS®

For media inquiries, please call George McCabe, B&P Public Relations, at (702) 325-7358.

**DISCLAIMER:** This data is based on information from the Greater Las Vegas Association of REALTORS® (GLVAR) Multiple Listing Service (MLS). This information is deemed reliable but is not guaranteed. MLS collects, compiles and distributes information about homes listed for sale by its subscribers who are real estate agents. MLS subscription is available to all real estate agents licensed in Nevada, but is not available to the general public. Not all licensed agents subscribe to the MLS. MLS does not include all new homes available or listings from non-MLS agents, nor does it include properties for sale by owner. The territorial jurisdiction of the GLVAR as a member of the National Association of REALTORS® includes Clark, Nye, White Pine and Lincoln Counties, Nevada, and such other areas as from time to time may be allocated to the GLVAR by the Board of Directors of the National Association of REALTORS®.

### Total Home Sales Value for Units Sold in Period



Source: Greater Las Vegas Association of REALTORS®

For media inquiries, please call George McCabe, B&P Public Relations, at (702) 325-7358.

**DISCLAIMER:** This data is based on information from the Greater Las Vegas Association of REALTORS® (GLVAR) Multiple Listing Service (MLS). This information is deemed reliable but is not guaranteed. MLS collects, compiles and distributes information about homes listed for sale by its subscribers who are real estate agents. MLS subscription is available to all real estate agents licensed in Nevada, but is not available to the general public. Not all licensed agents subscribe to the MLS. MLS does not include all new homes available or listings from non-MLS agents, nor does it include properties for sale by owner. The territorial jurisdiction of the GLVAR as a member of the National Association of REALTORS® includes Clark, Nye, White Pine and Lincoln Counties, Nevada, and such other areas as from time to time may be allocated to the GLVAR by the Board of Directors of the National Association of REALTORS®.