



Greater Las Vegas Association of REALTORS® June 2011 Statistics



	Single Family Residential Units			Condo/Townhouse Units		
	Jun 11	Change from May 11	Change from Jun 10	Jun 11	Change from May 11	Change from Jun 10
AVAILABILITY AT END OF PERIOD						
# of available units listed	22,702	-0.3%	+6.3%	5,248	-0.1%	-12.5%
Median list price of available units	\$ 129,900	+0.0%	-11.6%	64,900	-0.2%	-13.5%
Average list price of available units	\$ 206,085	-0.3%	-14.3%	124,879	-2.2%	-20.8%
*AVAILABILITY AT END OF PERIOD	Jun 11	Change from May 11	Change from Jun 10	Jun 11	Change from May 11	Change from Jun 10
# of available units listed w/o offers	11,350	+0.6%	+23.7%	2,656	-0.7%	-2.0%
Median list price of available units w/o offers	\$ 135,000	+0.0%	-18.2%	\$ 68,819	+1.2%	-23.5%
Average list price of available units w/o offers	\$ 254,407	-0.7%	-23.3%	\$ 165,940	-1.6%	-30.4%
NEW LISTINGS THIS PERIOD	Jun 11	Change from May 11	Change from Jun 10	Jun 11	Change from May 11	Change from Jun 10
# of new listings	4,916	-2.7%	+3.3%	1,207	+0.2%	-9.8%
Median price of new listings	\$ 129,900	+0.0%	-10.4%	\$ 62,800	+4.7%	-14.0%
Average price of new listings	\$ 180,447	-0.5%	-5.8%	\$ 92,784	-3.9%	-24.6%
UNITS SOLD THIS PERIOD	Jun 11	Change from May 11	Change from Jun 10	Jun 11	Change from May 11	Change from Jun 10
# of units sold	3,629	+16.7%	+8.0%	911	+3.5%	+0.7%
Median price of units sold	\$ 124,500	-1.2%	-11.1%	\$ 59,900	-4.5%	-14.4%
Average price of units sold	\$ 148,182	-6.2%	-11.7%	\$ 75,062	-13.3%	-17.1%
TIME ON MARKET FOR UNITS SOLD THIS PERIOD	Jun 11	May 11	Jun 10	Jun 11	May 11	Jun 10
0-30 days	45.2%	43.3%	52.2%	40.8%	44.1%	54.3%
31-60 days	21.4%	19.2%	15.9%	28.9%	24.8%	18.0%
61-90 days	10.7%	12.3%	10.0%	11.5%	11.1%	9.0%
91-120 days	7.4%	7.4%	6.1%	5.6%	5.8%	5.1%
121+ days	15.3%	17.7%	15.8%	13.2%	14.2%	13.7%
TOTAL HOME SALES DOLLAR VALUE FOR UNITS SOLD THIS PERIOD	Jun 11	Change from May 11	Change from Jun 10	Jun 11	Change from May 11	Change from Jun 10
	\$ 537,753,800	+9.4%	-4.7%	\$ 68,381,727	-10.3%	-16.6%

***This category reflects the existing market availability of listings without pending or contingent offers.**

Source: Greater Las Vegas Association of REALTORS®

For media inquiries, please call George McCabe, with B&P Public Relations, at (702) 325-7358.

DISCLAIMER: This data is based on information from the Greater Las Vegas Association of REALTORS® (GLVAR) Multiple Listing Service (MLS). This information is deemed reliable but is not guaranteed. MLS collects, compiles and distributes information about homes listed for sale by its subscribers who are real estate agents. MLS subscription is available to all real estate agents licensed in Nevada, but is not available to the general public. Not all licensed agents subscribe to the MLS. MLS does not include all new homes available or listings from non-MLS agents, nor does it include properties for sale by owner. The territorial jurisdiction of the GLVAR as a member of the National Association of REALTORS® includes Clark, Nye, Lincoln and White Pine Counties, Nevada, and such other areas as from time to time may be allocated to the GLVAR by the Board of Directors of the National Association of REALTORS®.



Greater Las Vegas Association of REALTORS® June 2011 Statistics

Sold Units Statistics by Area (see map)

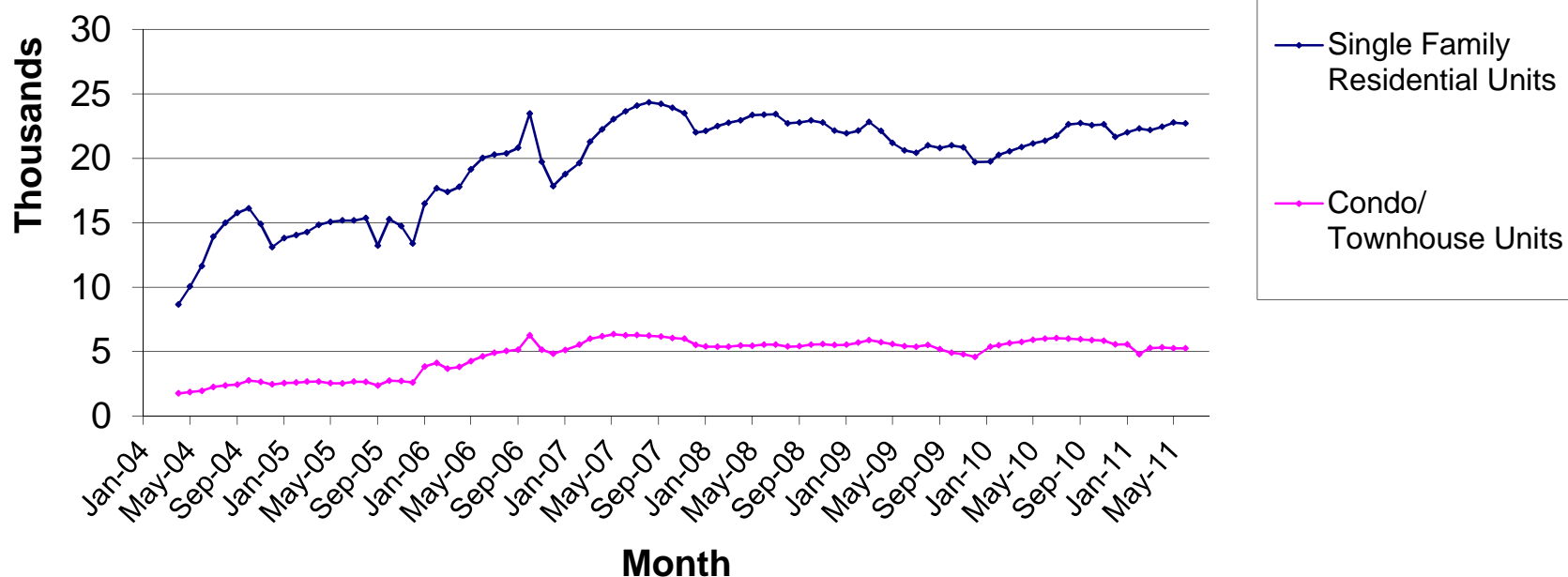
Area	Single Family Residential Units			Condo/Townhouse Units		
	# of units sold	Median Sold Price	Average Sold Price	# of units sold	Median Sold Price	Average Sold Price
101 - North	42	\$53,051	\$51,061	4	\$39,500	\$34,975
102 - North	244	\$129,900	\$154,115	12	\$76,100	\$79,202
103 - North	449	\$110,000	\$119,880	30	\$59,028	\$62,560
201 - East	64	\$40,000	\$42,083	5	\$125,000	\$110,860
202 - East	64	\$57,750	\$60,029	24	\$30,325	\$31,648
203 - East	85	\$90,000	\$102,646	16	\$33,500	\$36,006
204 - East	175	\$80,000	\$88,022	31	\$49,900	\$54,913
301 - South	68	\$73,250	\$83,353	70	\$68,500	\$134,544
302 - South	102	\$79,950	\$101,029	71	\$48,000	\$64,738
303 - South	29	\$132,900	\$150,195	51	\$71,125	\$79,396
401 - North West	122	\$55,000	\$63,587	5	\$39,500	\$39,220
402 - North West	106	\$72,000	\$75,851	41	\$35,500	\$35,521
403 - North West	135	\$114,900	\$127,577	68	\$52,950	\$55,534
404 - North West	263	\$210,000	\$274,090	46	\$98,750	\$114,001
405 - North West	63	\$129,995	\$160,428	50	\$60,450	\$62,794
501 - South West	168	\$114,500	\$136,520	26	\$49,350	\$50,411
502 - South West	166	\$175,500	\$242,180	44	\$66,500	\$84,667
503 - South West	236	\$142,500	\$169,709	122	\$57,350	\$79,475
504 - South West	194	\$128,550	\$149,170	57	\$63,750	\$65,805
505 - South West	51	\$143,942	\$167,774	13	\$85,000	\$87,762
601 - Henderson	103	\$128,800	\$160,657	24	\$61,200	\$67,023
602 - Henderson	39	\$155,000	\$167,664	34	\$81,000	\$81,609
603 - Henderson	54	\$110,000	\$174,991	16	\$69,750	\$92,563
604 - Henderson	93	\$115,250	\$124,469	2	\$75,500	\$75,500
605 - Henderson	188	\$133,000	\$138,614	9	\$69,000	\$68,600
606 - Henderson	15	\$228,950	\$257,662	35	\$81,500	\$97,543
701 - Boulder City	3	\$189,500	\$219,166	3	\$62,500	\$59,833
702 - Boulder City	2	\$450,000	\$393,333	-	\$0	\$0
800 - Mesquite	2	\$118,000	\$118,000	1	\$54,800	\$54,800
801 - Muddy River (Moapa, Glendale, Logandale, Overton)	6	\$87,000	\$103,317	-	\$0	\$0
802 - Mt. Charleston/Lee Canyon	1	\$200,000	\$200,000	-	\$0	\$0
803 - Indian Springs/Cold Creek	-	\$0	\$0	-	\$0	\$0
804 - Mountain Springs	-	\$0	\$0	-	\$0	\$0
805 - Blue Diamond	1	\$199,000	\$199,000	-	\$0	\$0
806 - State Line/Jean/Goodsprings	-	\$0	\$0	-	\$0	\$0
807 - Sandy Valley	-	\$0	\$0	-	\$0	\$0
808 - Laughlin	-	\$0	\$0	1	\$41,475	\$41,475
809 - Other Clark County	1	\$122,500	\$122,500	-	\$0	\$0
810 - Pahrump	53	\$114,400	\$113,038	-	\$0	\$0
811 - Nye County	-	\$0	\$0	-	\$0	\$0
812 - Lincoln County	2	\$134,500	\$134,500	-	\$0	\$0
813 - Other Nevada	1	\$436,000	\$436,000	-	\$0	\$0
814 - Amargosa Valley	-	\$0	\$0	-	\$0	\$0
815 - Beatty	-	\$0	\$0	-	\$0	\$0
816 - White Pine County	7	\$31,000	\$71,986	-	\$0	\$0
900 - Outside Nevada	1	\$85,000	\$85,000	-	\$0	\$0

Source: Greater Las Vegas Association of REALTORS®

For media inquiries, please call George McCabe, B&P Public Relations, at (702) 325-7358.

DISCLAIMER: This data is based on information from the Greater Las Vegas Association of REALTORS® (GLVAR) Multiple Listing Service (MLS). This information is deemed reliable but is not guaranteed. MLS collects, compiles and distributes information about homes listed for sale by its subscribers who are real estate agents. MLS subscription is available to all real estate agents licensed in Nevada, but is not available to the general public. Not all licensed agents subscribe to the MLS. MLS does not include all new homes available or listings from non-MLS agents, nor does it include properties for sale by owner. The territorial jurisdiction of the GLVAR as a member of the National Association of REALTORS® includes Clark, Nye, Lincoln and White Pine Counties, Nevada, and such other areas as from time to time may be allocated to the GLVAR by the Board of Directors of the National Association of REALTORS®.

Availability at End of Period

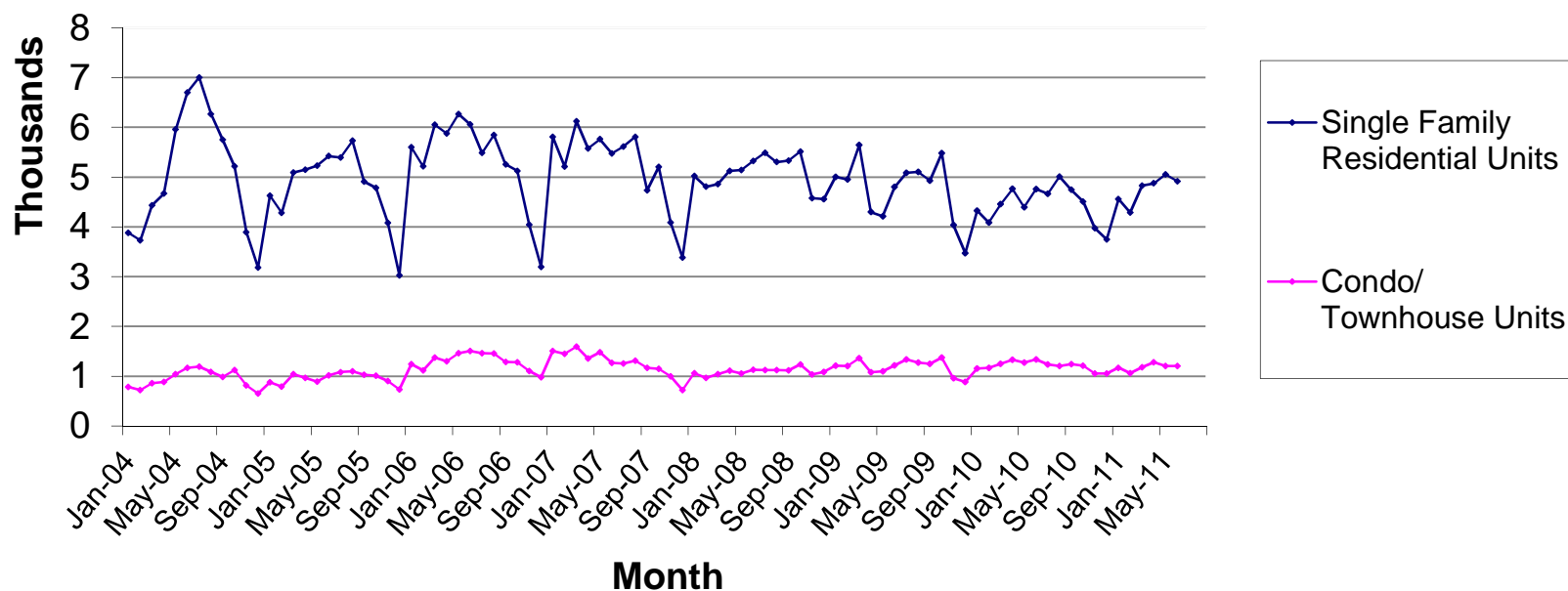


Source: Greater Las Vegas Association of REALTORS®

For media inquiries, please call George McCabe, B&P Public Relations, at (702) 325-7358.

DISCLAIMER: This data is based on information from the Greater Las Vegas Association of REALTORS® (GLVAR) Multiple Listing Service (MLS). This information is deemed reliable but is not guaranteed. MLS collects, compiles and distributes information about homes listed for sale by its subscribers who are real estate agents. MLS subscription is available to all real estate agents licensed in Nevada, but is not available to the general public. Not all licensed agents subscribe to the MLS. MLS does not include all new homes available or listings from non-MLS agents, nor does it include properties for sale by owner. The territorial jurisdiction of the GLVAR as a member of the National Association of REALTORS® includes Clark, Nye, White Pine and Lincoln Counties, Nevada, and such other areas as from time to time may be allocated to the GLVAR by the Board of Directors of the National Association of REALTORS®.

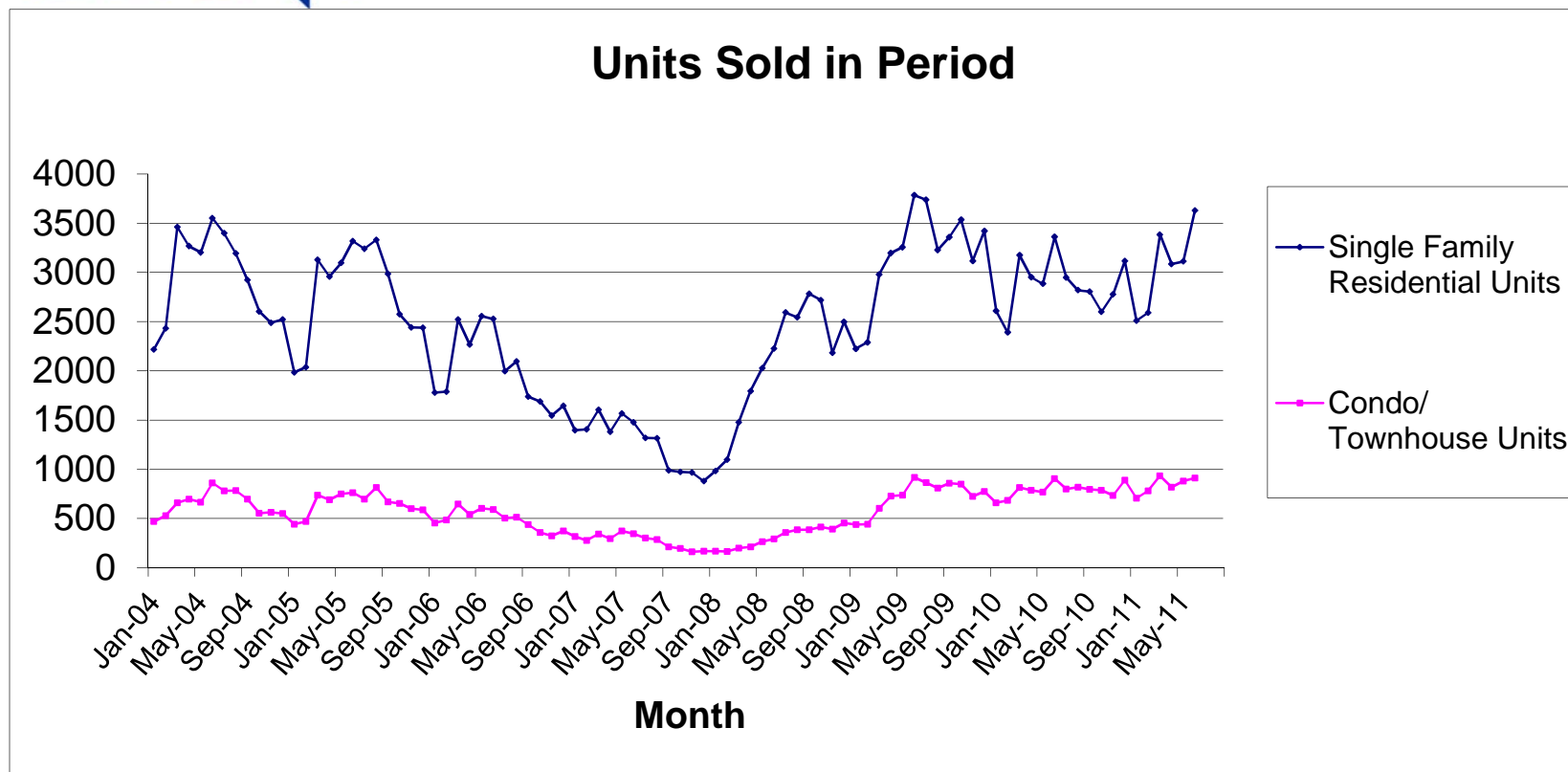
Number of New Listings



Source: Greater Las Vegas Association of REALTORS®

For media inquiries, please call George McCabe, B&P Public Relations, at (702) 325-7358.

DISCLAIMER: This data is based on information from the Greater Las Vegas Association of REALTORS® (GLVAR) Multiple Listing Service (MLS). This information is deemed reliable but is not guaranteed. MLS collects, compiles and distributes information about homes listed for sale by its subscribers who are real estate agents. MLS subscription is available to all real estate agents licensed in Nevada, but is not available to the general public. Not all licensed agents subscribe to the MLS. MLS does not include all new homes available or listings from non-MLS agents, nor does it include properties for sale by owner. The territorial jurisdiction of the GLVAR as a member of the National Association of REALTORS® includes Clark, Nye, White Pine and Lincoln Counties, Nevada, and such other areas as from time to time may be allocated to the GLVAR by the Board of Directors of the National Association of REALTORS®.

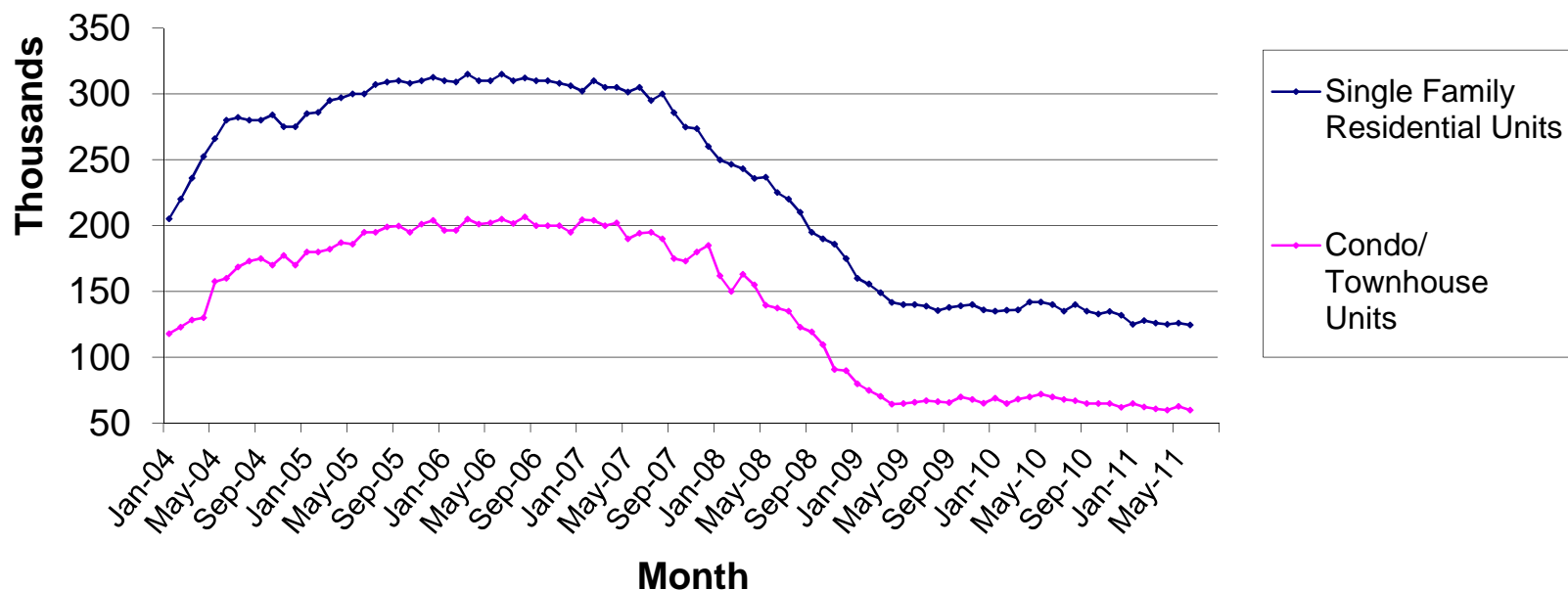


Source: Greater Las Vegas Association of REALTORS®

For media inquiries, please call George McCabe, B&P Public Relations, at (702) 325-7358.

DISCLAIMER: This data is based on information from the Greater Las Vegas Association of REALTORS® (GLVAR) Multiple Listing Service (MLS). This information is deemed reliable but is not guaranteed. MLS collects, compiles and distributes information about homes listed for sale by its subscribers who are real estate agents. MLS subscription is available to all real estate agents licensed in Nevada, but is not available to the general public. Not all licensed agents subscribe to the MLS. MLS does not include all new homes available or listings from non-MLS agents, nor does it include properties for sale by owner. The territorial jurisdiction of the GLVAR as a member of the National Association of REALTORS® includes Clark, Nye, White Pine and Lincoln Counties, Nevada, and such other areas as from time to time may be allocated to the GLVAR by the Board of Directors of the National Association of REALTORS®.

Median Price of Units Sold in Period

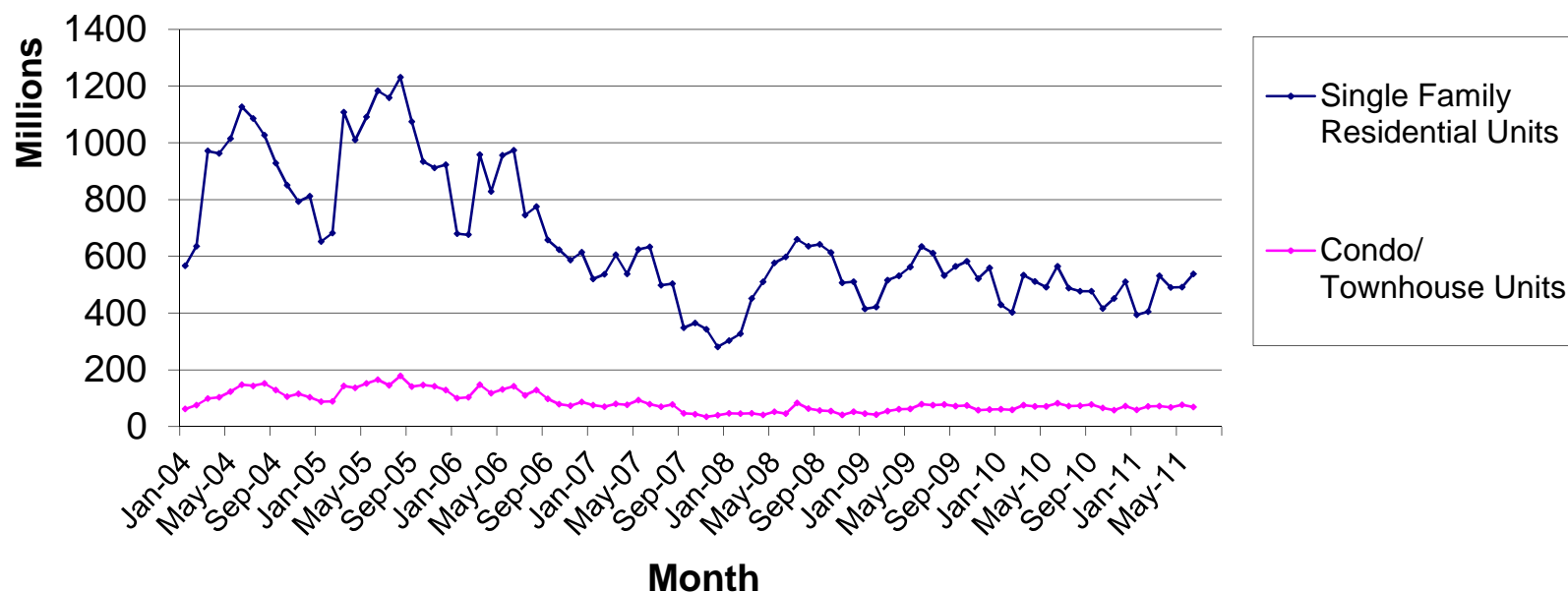


Source: Greater Las Vegas Association of REALTORS®

For media inquiries, please call George McCabe, B&P Public Relations, at (702) 325-7358.

DISCLAIMER: This data is based on information from the Greater Las Vegas Association of REALTORS® (GLVAR) Multiple Listing Service (MLS). This information is deemed reliable but is not guaranteed. MLS collects, compiles and distributes information about homes listed for sale by its subscribers who are real estate agents. MLS subscription is available to all real estate agents licensed in Nevada, but is not available to the general public. Not all licensed agents subscribe to the MLS. MLS does not include all new homes available or listings from non-MLS agents, nor does it include properties for sale by owner. The territorial jurisdiction of the GLVAR as a member of the National Association of REALTORS® includes Clark, Nye, White Pine and Lincoln Counties, Nevada, and such other areas as from time to time may be allocated to the GLVAR by the Board of Directors of the National Association of REALTORS®.

Total Home Sales Value for Units Sold in Period



Source: Greater Las Vegas Association of REALTORS®

For media inquiries, please call George McCabe, B&P Public Relations, at (702) 325-7358.

DISCLAIMER: This data is based on information from the Greater Las Vegas Association of REALTORS® (GLVAR) Multiple Listing Service (MLS). This information is deemed reliable but is not guaranteed. MLS collects, compiles and distributes information about homes listed for sale by its subscribers who are real estate agents. MLS subscription is available to all real estate agents licensed in Nevada, but is not available to the general public. Not all licensed agents subscribe to the MLS. MLS does not include all new homes available or listings from non-MLS agents, nor does it include properties for sale by owner. The territorial jurisdiction of the GLVAR as a member of the National Association of REALTORS® includes Clark, Nye, White Pine and Lincoln Counties, Nevada, and such other areas as from time to time may be allocated to the GLVAR by the Board of Directors of the National Association of REALTORS®.