



Parks & Recreation Department  
Public Works Engineering Services

## ***Craig Ranch Reinvestment Plan***

---

*City Council Work Session*

*August 5, 2009*

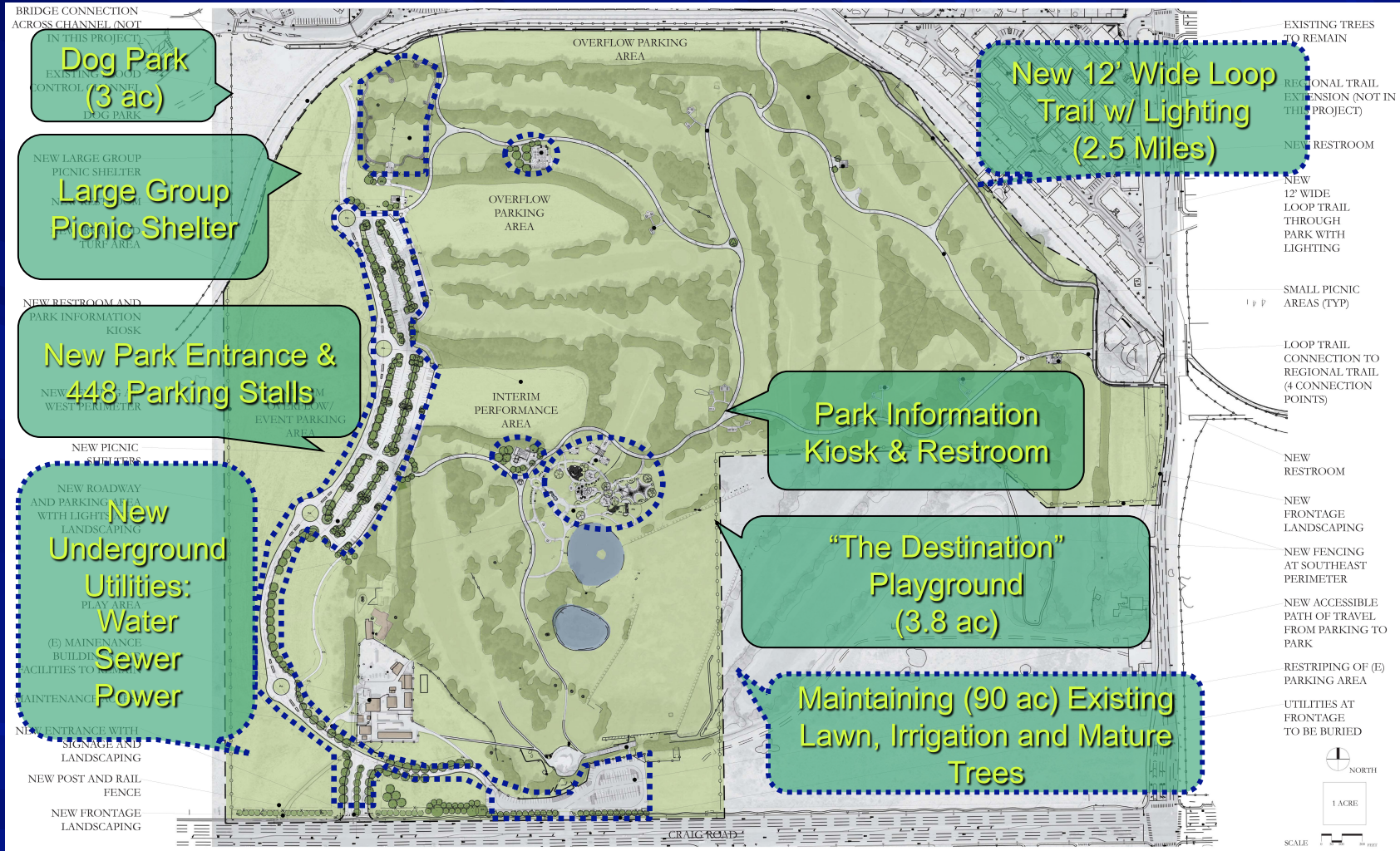
# CRAIG RANCH REGIONAL PARK



**\* conceptual master plan**



# CRAIG RANCH REGIONAL PARK



PHASE ONE SITE PLAN  
SEPTEMBER 11, 2008

CRAIG RANCH REGIONAL PARK

CITY OF NORTH LAS VEGAS  
NORTH LAS VEGAS



PHASE 1 – SITE LAYOUT (Start of Construction August 2009)

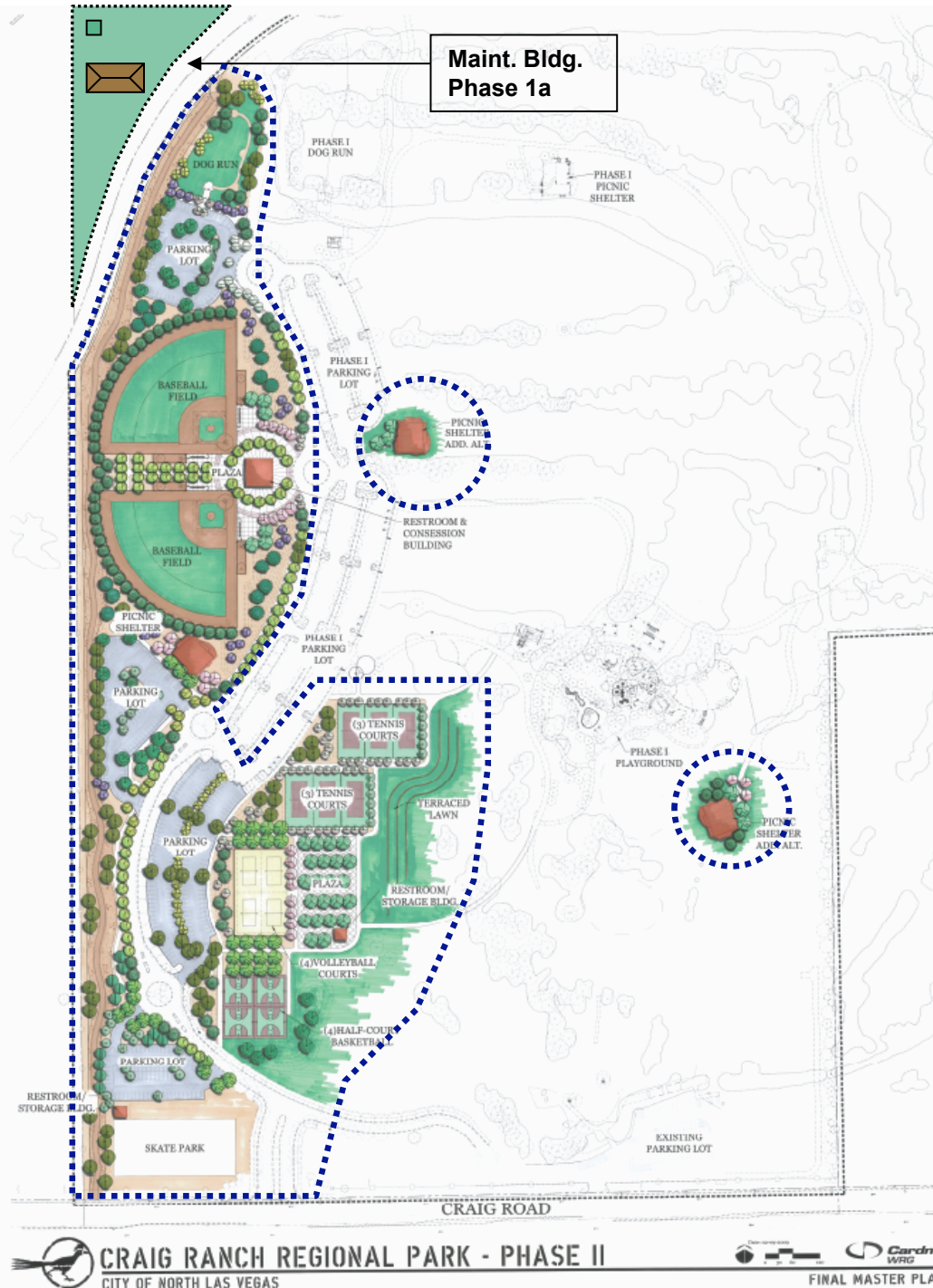


# CRAIG RANCH REGIONAL PARK

## PHASE 2 SITE LAYOUT

Currently 40% Design,  
Cardno WRG INC.  
Includes:

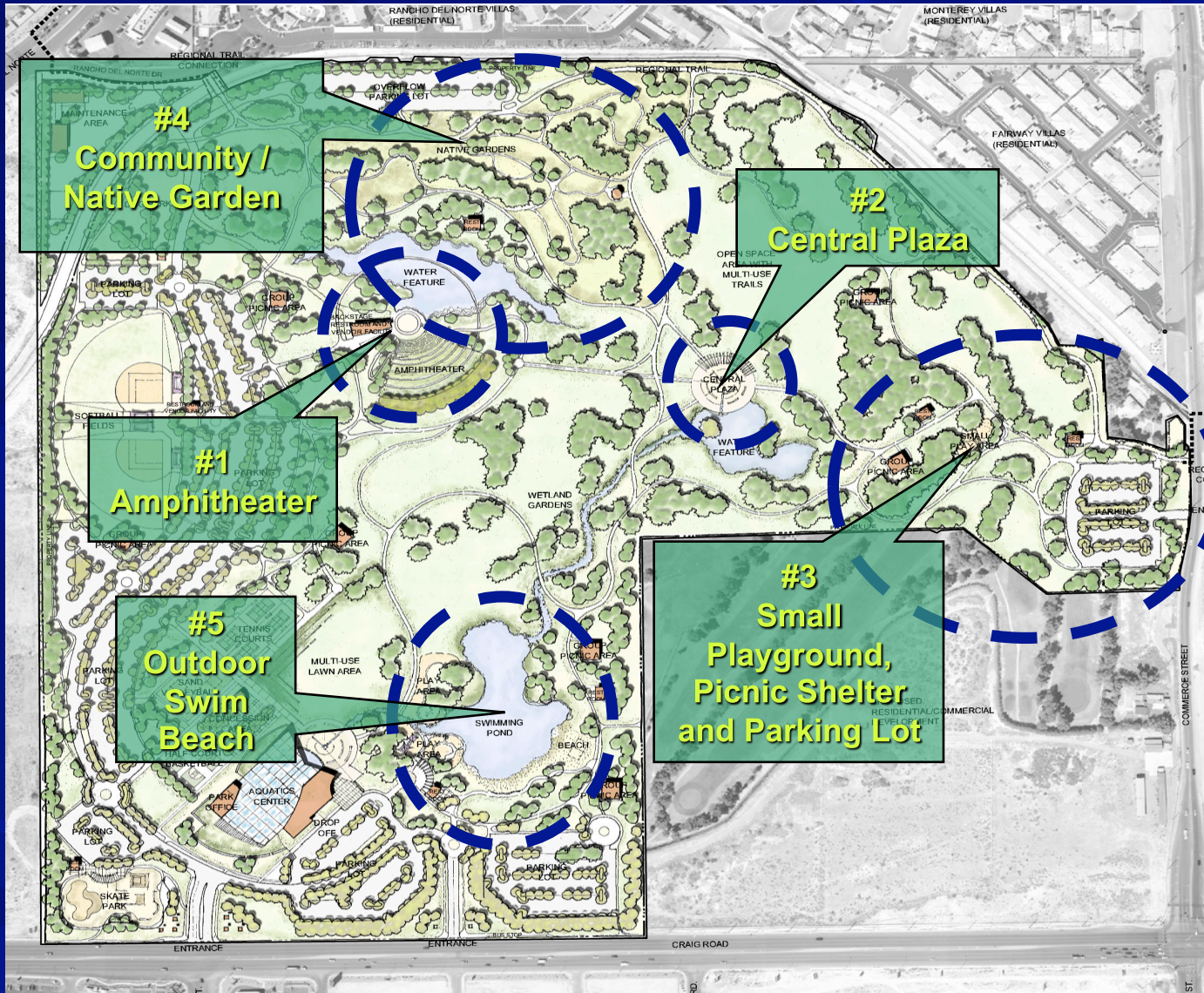
- (2) Large Group Picnic Shelters
- (2) Baseball Fields w/ Picnic Shelter and Restrooms
- (6) Tennis Courts
- (4) Volleyball Courts
- (4) Basketball Courts



- Dog Park (2 ac)
- Skate & Bike Park
- 413 New Parking Stalls



# CRAIG RANCH REGIONAL PARK



## Reinvestment Strategy



# CRAIG RANCH REGIONAL PARK

- Current Bidding Climate Remains Favorable for Construction Projects

- Phase 1 Construction Budget: \$19,100,000  
(Constr. Bid = \$11.2 and a Project Savings = \$7,000,000 )

- Phase 2 Construction Budget: \$19,900,000  
(Constr. Estimate = \$11.7 and a Project Savings = \$8,200,000)

- Remaining Construction Budget for the Five Park Elements: \$15,200,000

- Project Funding Source: SNPLMA – Funds are Project Specific and any unspent project funds must be returned to BLM

## Action:

- Direction to move forward with the Reinvestment Plan
- Establish Priority of the Five Park Elements as Referenced in the Master Plan
- Include the Five Park Elements as Bid Additive for Phase 2

Note: Staff's Recommendation Supported by PRAB, June 9, 2009

*Cardno WRG Inc., Contract Amendment scheduled for August 19, 2009*



# CRAIG RANCH REGIONAL PARK



Tentative Completion: Fall 2011



# CRAIG RANCH REGIONAL PARK

## Tentative Construction Schedule:

**Phase 1 August 2009 – October 2010**

**Phase 2 Fall 2010 – Fall 2011**

