

# BOULDER CITY ROADWAY ALTERNATIVES STUDY



Presented December 11, 2007

PBS

# Purpose and Scope

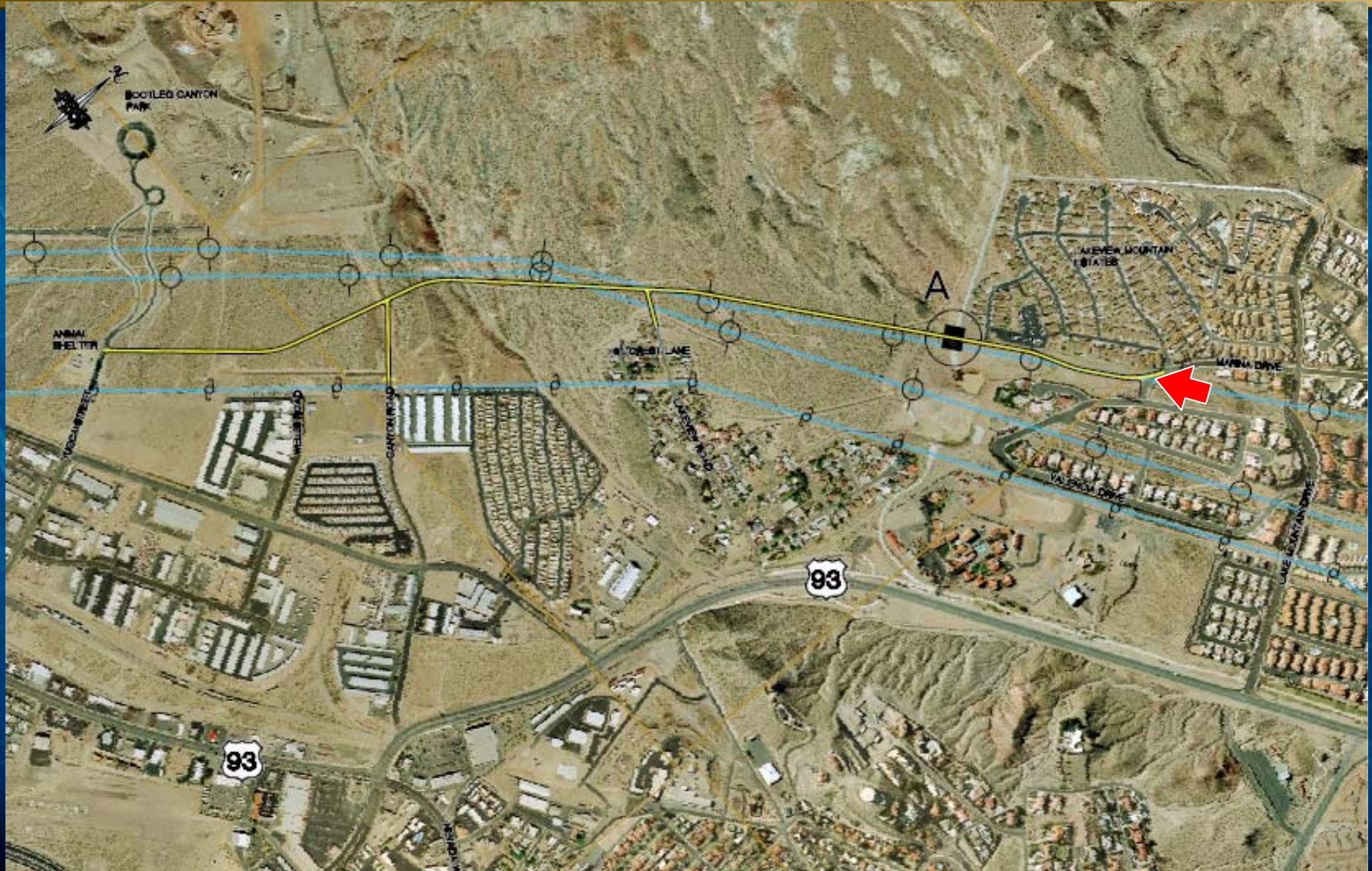


- Reduced levels of service expected when Hoover Dam By-Pass opens in 2010
- Examine alternative access for neighborhoods north of US 93
- Four alternatives were examined
- 35 MPH design speed; 25 MPH posted speed
- No drainage or traffic study was performed

# Existing Condition



# ALTERNATIVE 1 - North Alignment



# Looking West from Marina Drive



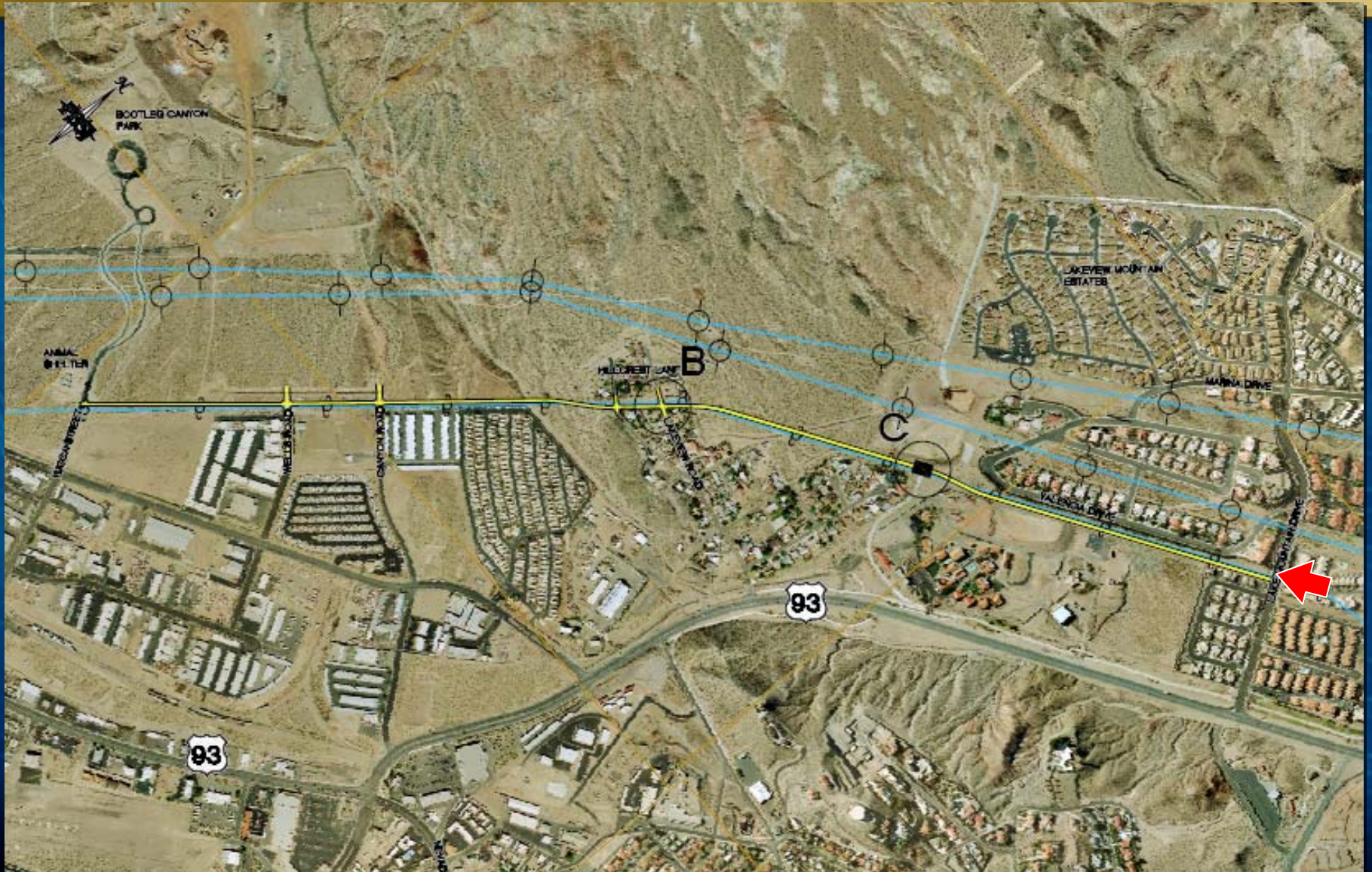
# ALTERNATIVE 1 - North Alignment



# Looking Northeast at channel bridge into the detention basin



# ALTERNATIVE 2 - South Alignment

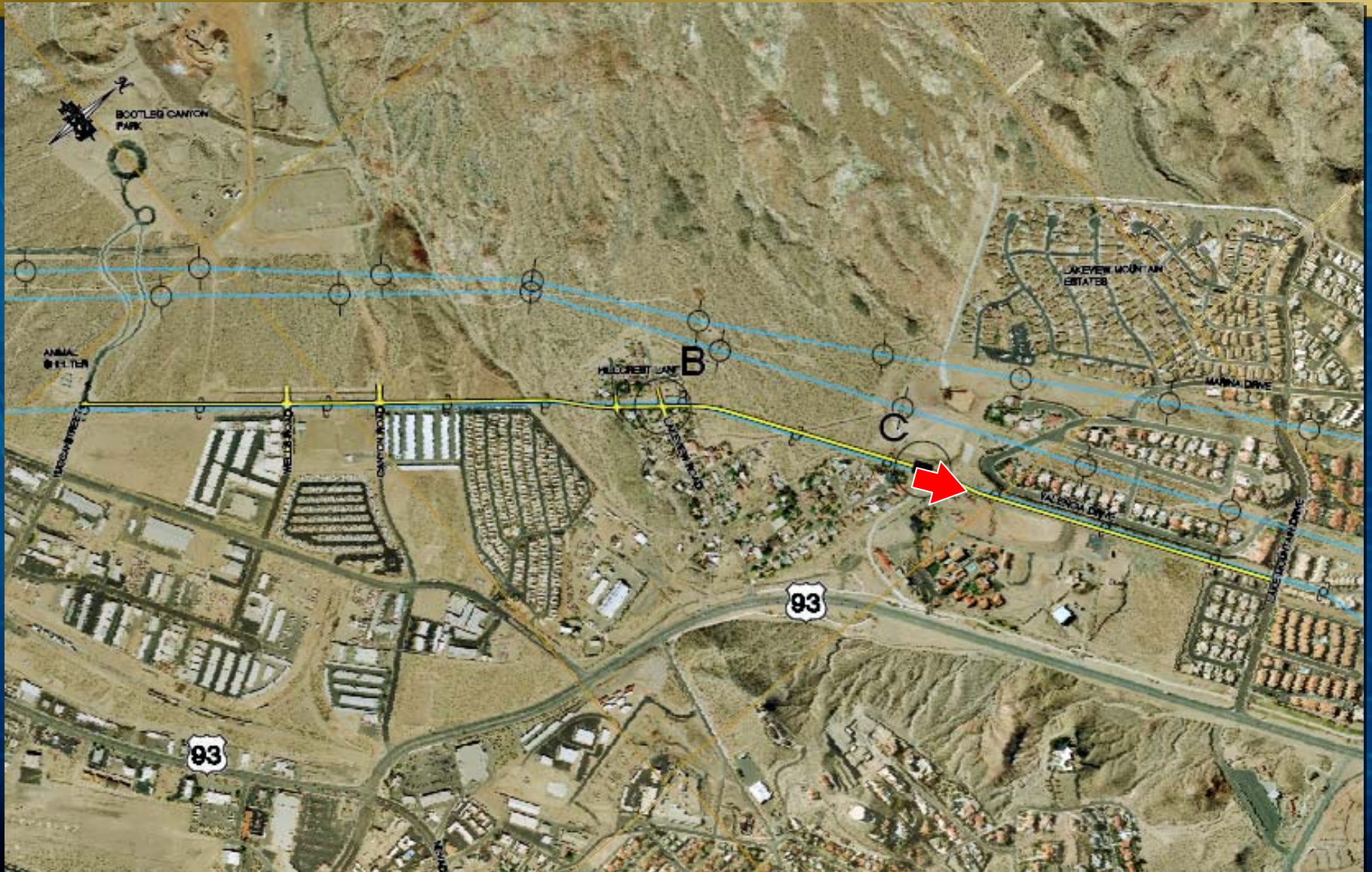




# West from Lake Mountain Drive



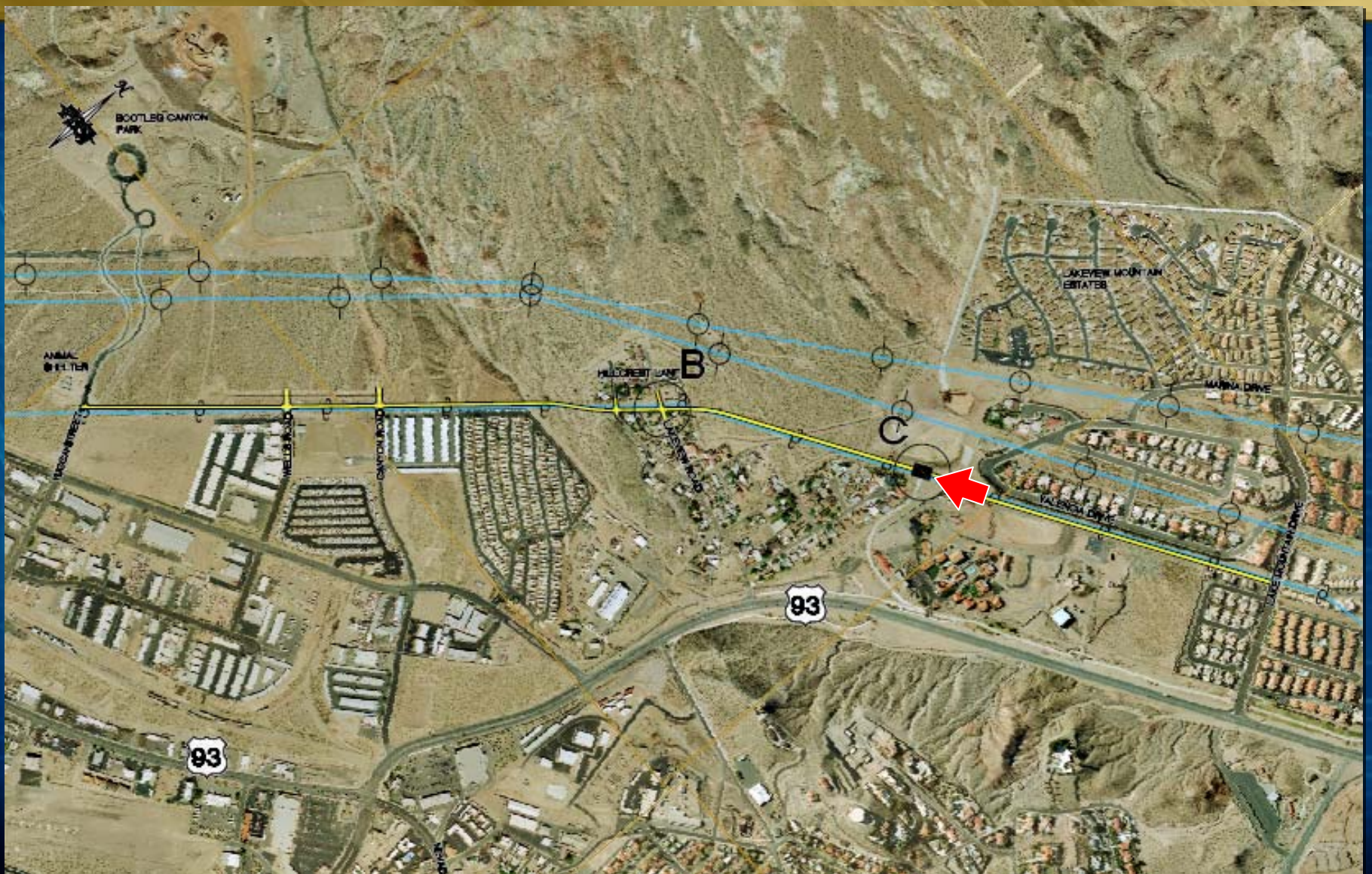
# ALTERNATIVE 2 - South Alignment



# East towards Lake Mountain Drive



# ALTERNATIVE 2 - South Alignment



# West at channel out of the detention basin



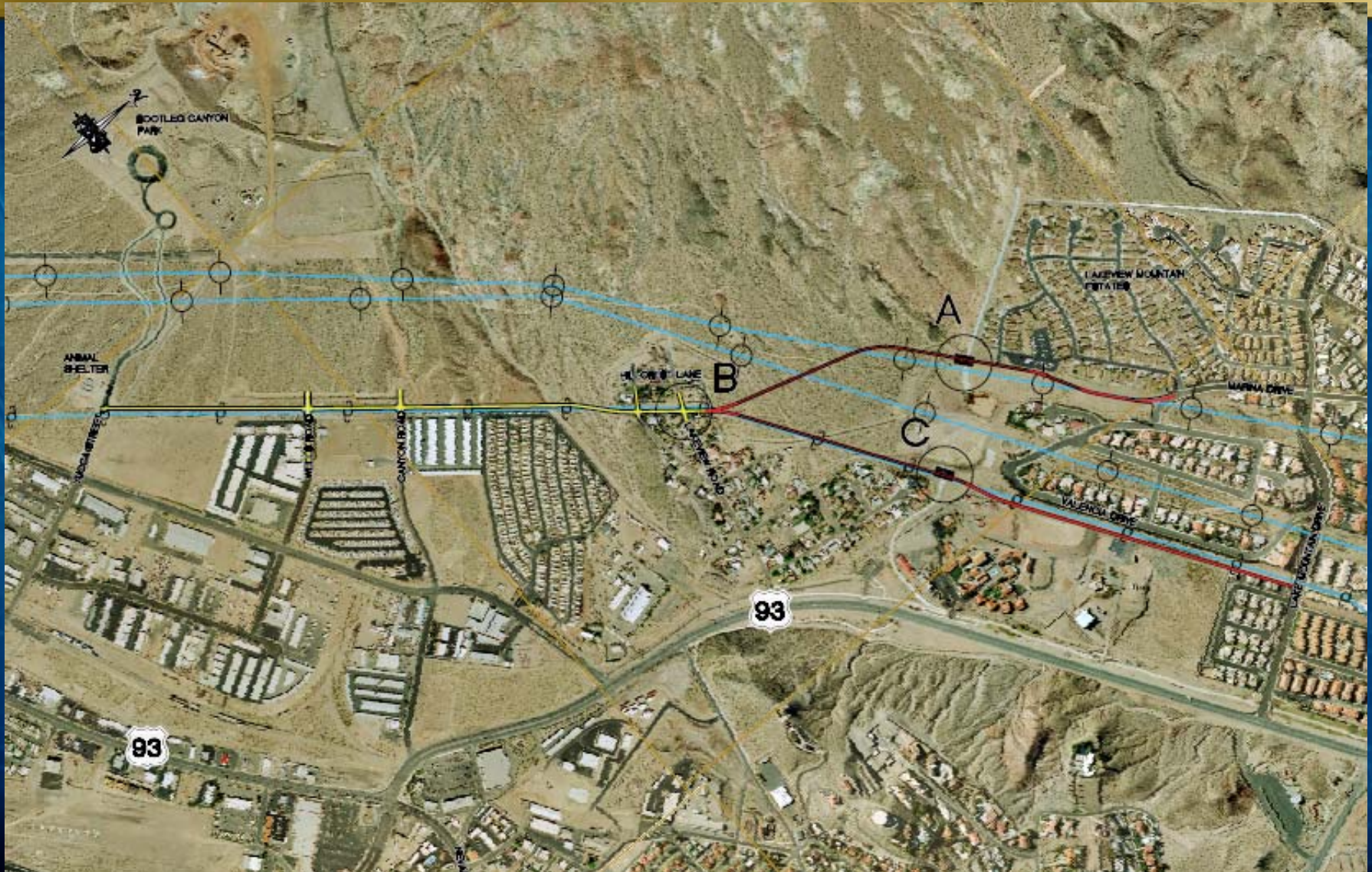
# ALTERNATIVE 2 - South Alignment



# West from Lakeview Road



# ALTERNATIVE 3 - South Couplet



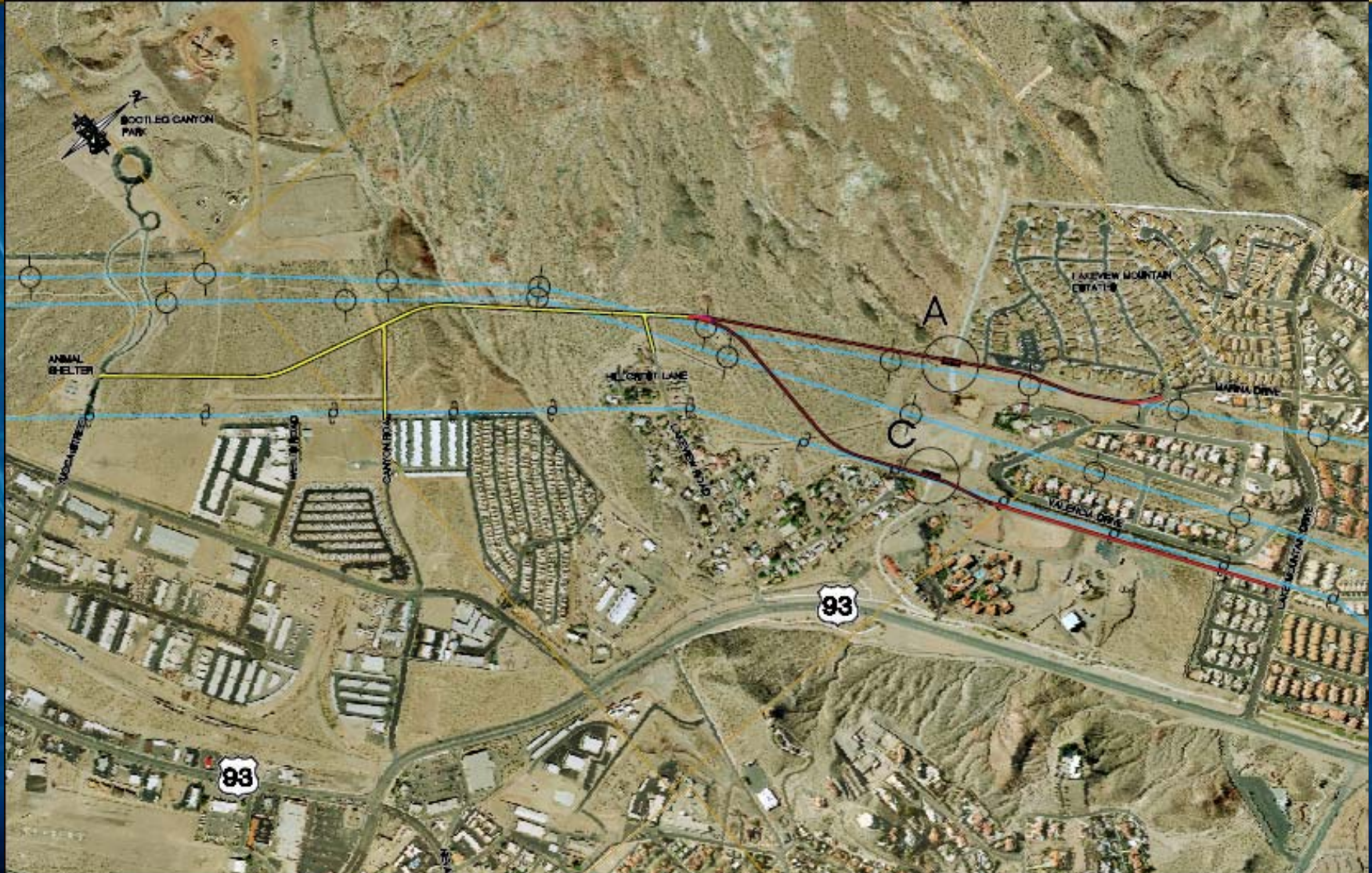


# One-Way Couplet



11/01/2007

# ALTERNATIVE 4 - North Couplet



# Estimated Project Costs

(millions \$)



Alternative 1 – North	\$2.56
Alternative 2 – South	\$3.48
Alternative 3 – South Couplet	\$2.66
Alternative 4 – North Couplet	\$2.29

**Questions?**